

Chaffey Theatre – Renmark

Via Seventeenth Street Renmark



TECHNICAL FACILITIES



Contents

Contents	1
Contact Details.....	3
Theatre Technician	3
Venue Manager	3
Venue Location	3
Loading Dock Details.....	5
Seating	5
Stage Details	6
Dressing Rooms	6
Green Room.....	6
Lighting Equipment.....	7
Lighting Control	7
Dimming & Power.....	7
Power Distribution.....	7
Lighting Positions.....	7
Lighting Fixtures.....	8
Audio Equipment.....	8
Audio Visual Equipment	10
Fly System	10
Standard Rig.....	11
Theatre Usage Guidelines.....	11
Appendix 1 Venue map	12
Appendix 2 Seating layout.....	13
Appendix 3 Venue Plans	14
Stage Plan	14
Auditorium and Stage Plan	15
Auditorium Section.....	16
Appendix 4 Standard Lighting Rig.....	17

INTRODUCTION

The Chaffey Theatre Technical Specifications are a comprehensive guide to audio visual and technical equipment at the Chaffey Theatre. This guide is intended for hirers and technical staff as reference for hiring and utilising the Theatre space. The document is to be used in conjunction with planned consultation with Chaffey Theatre management by all hirers of the venue.

COUNTRY ARTS SA

Country Arts SA is one of South Australia's largest arts organisations, providing arts and services across regional South Australia through a range of arts programs and initiatives, the management of performing and visual arts venues, and the provision of grant funding which supports the creative endeavours of communities and individuals.

Each year Country Arts SA tours world class productions that entertain, challenge and stimulate a wide variety of audiences in our five performing arts centres in Mount Gambier, Port Pirie, Renmark, Noarlunga and Whyalla.

CONTACT DETAILS

THEATRE TECHNICIAN

Luke Meaney

E-mail: luke.meaney@countryarts.org.au

Mobile: 0476 859 743

Office: 08 8586 1800

ARTS CENTRE MANAGER

Sharlene Goodman

E-mail: sharlene.goodman@countryarts.org.au

Mobile: 0401 126 071

Office: 08 8586 1801

GENERAL THEATRE ENQUIRIES

Sophie Cass and Lara Vallelonga

E-mail: chaffey@countryarts.org.au

Phone 08 8586 1800

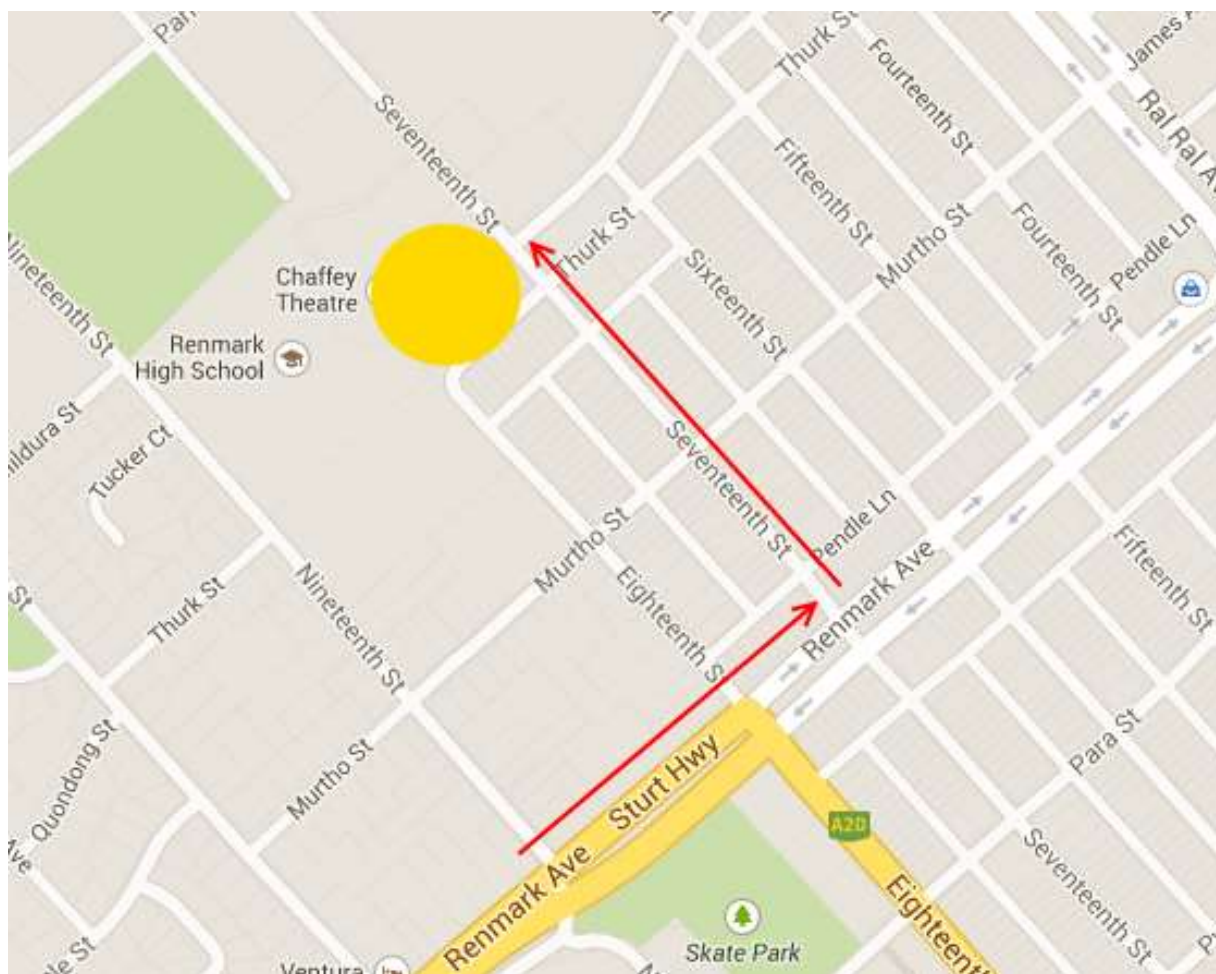
VENUE LOCATION

South Australia's Riverland Mallee region is one of the most diverse, fascinating and beautiful regions in Australia with the legendary Murray River as its focus. In the heart of this beautiful country, in the town of Renmark, the Chaffey Theatre is a fully equipped multi-purpose arts centre which can accommodate conferences, performing arts, film screenings, seminars and product launches. The town sits on the edge of the river and is surrounded by vineyards, citrus groves, flower growing properties and lush parks and gardens, an oasis gateway to the outback.

With a population of 9475 and a theatre base of over 40,000 (population of the Riverland) the Chaffey Theatre is ideally located to service the residents of the region. Renmark is 253 km northeast of Adelaide and 145 km west of Mildura in Victoria. This hauntingly beautiful landscape of wetlands, deep gorges, magnificent scrub and rich grass land teems with wildlife and there are many different ways to enjoy the natural wonders of the Murray and its surrounding areas.

The Chaffey Theatre is named after brothers William and George Chaffey who established Australia's first irrigation settlement in 1887.

The Chaffey Theatre is Located on Seventeenth Street Renmark



For Google Maps assistance:

<https://tinyurl.com/ChaffeyLocation>

Common Renmark Accommodation – No Order	Common Food – No Order
Renmark Hotel	IGA Foodland / Woolworths – Supermarket
Renmark Club Apartments	Chill 'n' Grill – Dining
Citrus Valley Motel – Renmark	Riverland Golden Palace – Dining/Takeaway
Renmark Country Club	Renmark Club – Dining
Paringa Hotel Motel	Nanya Restaurant – Dining
BIG4 Renmark Riverfront Holiday Park	Dominoes – KFC – McDonalds – Subway – Hungry Jacks
Paringa Resort	Arrosto – Coffeehouse / Roaster

PHYSICAL LAYOUT

LOADING DOCK DETAILS

Access to the Chaffey Theatres loading dock is through the main car park and past the main entrance.

Height 900mm from ground.

Width of dock door 2.3M.

Height to top of dock door 4M.

The Chaffey Theatres Loading dock is specifically designed for loading of large sets and shows.

We also have ground level access for low vehicles through the foyer 1.2m x 2.3m.

A personal access gate is located in the loading dock for convenience if required.

There is enough space in front of the loading dock for a full length semi-trailer.

For Venue Layout see [Appendix 1](#).

SEATING

The Chaffey Theatre is a 490 seat venue.

When using the thrust stage or orchestra pit the capacity is reduced by 10 seats (AA Row).

If your show would like to use our in auditorium audio position seating capacity is reduced by a further 11 seats K Row 16-20 and KK row 17-22.

The theatre can also accommodate up to 5 wheelchairs in rows C&D seats 2-8.

Country Arts SA reserves the right to withdraw from sale for any performance, a maximum of 8 seats. Therefore above capacities may reduce by 8.

For Seating Layout see [Appendix 2](#)

STAGE DETAILS

The Chaffey Theatre stage is unraked timber (bearers) covered with 25mm chipboard and faced with 6mm tempered Masonite. Drilling into the stage surface is permitted with discretionary permission.

Our stage surface is painted Cinema Flat black along with both concrete wings.

Proscenium details: 12.2M wide by 7.2m high.

Depth of stage from front edge to rear edge of stage surface: 11.2m.

Front of stage to House curtain line: 1.25m.

House curtain to front of thrust: 2.65m.

Width of stage surface: 16m.

Full width of stage area including wing space: 20.5m

The Chaffey Theatre also has an electrically operated pit lift that can be set anywhere from stage level to the floor of the orchestra pit the front of the thrust is 5.2m wide and 1.4. deep at centre widening out to 9.8m on its downstage edge.

Approximate drawings for the venue are at the end of this document [See Appendix 3.](#)

DRESSING ROOMS

The Chaffey Theatre is equipped with two Large 12 capacity Dressing rooms with every Hire and one 4 person dressing room is available upon request.

All dressing rooms have costume racks, lit makeup mirrors, stage sound and paging speakers.

Wired internet is available upon request in all dressing rooms.

The large dressing rooms are equipped with 1 shower and 2 toilets and Ironing facilities and full length walk out mirrors.

The small dressing room has 1 shower and 1 toilet.

GREEN ROOM

The green room is equipped with Fridge, tea and coffee facilities and microwave oven.

Stage sound and paging is permanently installed.

The green room also performs double duty as production office when required as such has wi-fi internet facilities available upon request.

A large table and several comfortable chairs are provided for your convenience.

The Greenroom leads to a private small open air enclosure.

In the outdoor space there is an orange tree growing gifted to the theatre, fruit is often available seasonally.

Smoking is prohibited in all areas of the theatre excluding the Greenroom's outdoor space and forecourt.

TECHNICAL EQUIPMENT

LIGHTING EQUIPMENT

The Chaffey Theatre is committed to continually updating and maintaining lighting equipment to ensure a high standard of production for all hirers.

For standard Rig See [Appendix 4](#)

LIGHTING CONTROL

Our ETC Ion is installed in our control room with 2x touchscreens and a 2x 20 fader wing and Android based remote focus unit.

We currently have 2 DMX streams from lighting control to the following areas.

PS LX bridge 1, PS LX bridge 2, PS Stage gallery in line with all LX bars, and onstage in both edges of the proscenium.

DMX inputs are located by default in the Control Room (Univ 1+2) and Auditorium Ops (Univ 1+2).

SM position has the capability to have 1 universe.

Additional DMX5 can be deployed for addition locations or universes

All lighting cabling is 5pin data cable we also have a large stock of DMX5 to assist with your show.

DIMMING & POWER

The Chaffey Theatre is equipped with 192 240v patch points to all Lighting positions.

24 x 5KVA Dimming circuits

72 x 2.4KVA Dimming circuits

24x APS Circuits for intelligent fixtures that power On/Off via DMX detection.

All diming circuits are supplied by LSC TEKO dimmers.

There are 3 x 32A 3 Phase outlets located on Prompt side wall of stage.

There are 2x 10A outlets in all 8 floor traps on stage.

Clean audio power is located on the inside edge of the proscenium wall both sides of stage.

POWER DISTRIBUTION

1 x 32A 3 Phase distro. 3x 10A circuits

1x 30M 32A Extension lead

A good general supply of 240V black extension leads with piggyback plugs.

LIGHTING POSITIONS

4x 14m lighting bars with 28 patch points with sub-patch on PS gallery.

1x 14m flood bar set for Cyc lights and oddly spaced patch points

2x Front of house Lighting bridges

6x Front of house Box booms each with 3 perches

8x Portable side booms to be installed upon request labour charge may apply.

1x Concealed hatch followspot position above control room with 2x Robert Juliet 750w Followspots

LIGHTING FIXTURES

INTELLIGENT FIXTURES – ALL INTELLIGENT FIXTURES PRE-INSTALLED

- 8 x Martin Quantum Profile
- 12 x Martin Aurora XB Wash
- 18 x ETC Coloursource Cyc Unit
- 20 x ETC Lustr2 26° lens
- 4 x ETC Lustr2 19° lens

FRESNELS

- 4 x 2KW Selecon (10" Lens)
- 30 x 1KW CCT Starlet
- 10 x 500W CCT Minuette – Upon prior request only

PROFILES

- 14 x 750W ETC Source 4 Zoom 15°-30°
- 12 x 1KW CCT Silhouette 15 9°-21°
- 16 x 1.2KW Selecon ZS1200M 18°-34°
- 12 x 1KW CCT Silhouette30 28°-58°
- 16 x 650W CCT Minuette 21°-36° - Upon prior request only

PARCANS

- 8 x 240V PAR16 Birdies

AUDIO EQUIPMENT

CONSOLES

Roland V-Mixer M400

8 Inputs, 8 Outputs 18 Busses, 8 Matrices
Full Specs <http://www.roland.com/products/en/M-400/>
Additional [multicore](#) for additional 32 Inputs and 8 outputs

Capable of multitrack recording by prior arrangement

Allen & Heath GL2200

- 24 Channels (22 Mono 2 Stereo)
- 4 Groups
- 6 Auxiliary outputs

AMPLIFIERS – FOH USE

- 1 x Yamaha PX3
- 1 x Yamaha PX5

FRONT OF HOUSE SPEAKERS

- 4 x Bose 802 Fixed to proscenium
- 2 x Bose 402 Subs on rolling plinths

FOLDBACK SPEAKERS

6 x Meyer UPJ-1P

PLAYBACK

2 x Denon C680 Cd players
USB .wav playback through M400
3.5mm Jack to XLR adaptor for devices

EFFECTS & EQ

Software reverb, delay, compression, and EQ in Roland M-400

2 x DBX 2231 2 channel 31 Band Graphic EQ (2 Channels installed across FOH)

WIRED MICROPHONES

4 x Shure β 58
8 x Shure SM58
6 x Shure KSM-109
6 x Shure MX393/0 Omni-directional boundary mic
6 x Shure EZO/G miniature overhead choir mic
6 x AKG D330 BT Dynamic
Drum Microphone Kit
-Beta 52A
-4 x Shure SM57
-4 x A56D Drum Mounting Units

WIRELESS MICROPHONES

4 x Shure ULX P4 Receivers
4 x Shure SM58 ULX handheld transmitter
4 x Shure ULX1 body pack transmitter
4 x Shure WL185 Lavalier Mic

DI

4 x BSS AR-133 Active DI

MULTICORE

1 x Roland S-4000 Digital snake 32 Inputs to Headerbox or M-400 via Cat 5

1 x Jands 16 in 4 out XLR3 Multicore and stagebox

TALKBACK COMMUNICATION

Jands Talkback Master station Located Prompt side at stage management position.

Stage sound relay and cast call to dressing rooms and green room.

6 x Wired talkback headsets with communication points in all key areas.

4 x Wireless communication packs

AUDIO VISUAL EQUIPMENT

CINEMA PROJECTION

3KW 22000 ANSI Lumen Christie CP2200 Projector installed in control room
DVI, HDMI, Component and Composite video signal and project to cinema screen or CYC.
RealD 3d system for DCP playback on cinema screen.
Cinema audio is QSC 7.1 system.

STAGE AV

1 x Rear projection screen 3.7m x 2.7m with full stage width black masking
1 x Sony PX40 Data projector 3500 ANSI Lumens (VGA)
1 x Sony VPL-CX70 Data projector 2000 ANSI Lumens (VGA)
Have capability to send 1 VGA signal from Control room and either side of stage to almost any projector location via VGA to Cat 5 converters. HDMI to VGA adaptors available.

FLY SYSTEM

The Chaffey Theatre is equipped with a single purchase fly line system with 30 fly lines available for performance use. With a maximum capacity of 250kg for normal lines and 195kg for Lighting bars.

Line No.	Distance from Setting Line	Description
0	340mm	Cinema Screen ONLY – Permanent
1	700mm	House Curtain
3	1017mm	Leg 1
5	1311mm	Border 1
7	1612mm	Number 1 Lighting Bar
9	1906mm	Spare
10	2063mm	Spare
12	2348mm	Spare
14	2648mm	Leg 2
17	3100mm	Border 2
19	3405mm	Number 2 Lighting Bar
21	3705mm	Spare
23	4330mm	Black Traveller Curtain
25	4627mm	Spare
28	5072mm	Leg 3
31	5523mm	Border 3
33	5815mm	Number 3 Lighting Bar
36	6261mm	Rear Projection Screen
38	6568mm	Spare
40	6856mm	Spare
42	7157mm	Leg 4
44	7462mm	Border 4
47	7919mm	Number 4 Lighting Bar
51	8761mm	Spare
53	9054mm	Leg 5
54	9197mm	Border 5
56	9496mm	Cyclorama Lighting Bar – Lighting 5
60	10105mm	Spare
62	10389mm	Traveller Curtain (Flat)
63	10550mm	Cyclorama (White)
64	10699mm	Spare

STANDARD RIG

The theatre is hired in a standard configuration for lighting, sound and fly lines. This includes the lighting rig standard layout. Default Fixtures installed, Martin Quantum, Martin Aurora XB, ETC Lustre2 Profiles and Source 4 Zoomspots. The stage apron at auditorium floor level with seats in; stage floor colour – black; stage clean clear and tidy. Any variation to the standard configuration will be made at the hirer's expense and returned to the standard configuration at the hirer's expense.

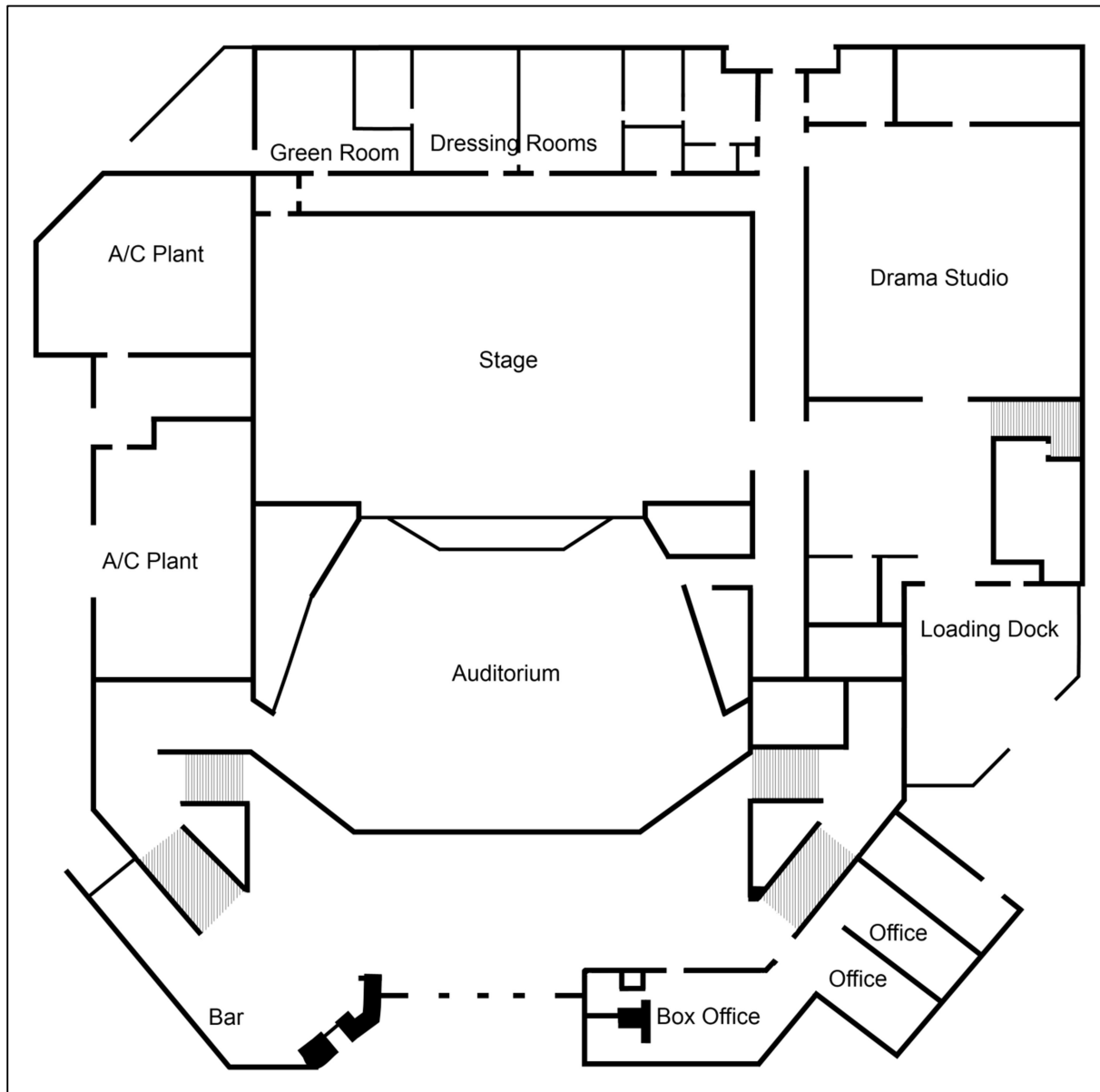
The theatre must be informed in writing at least two weeks prior to the bump in of any change you wish to make to the standard rig.

THEATRE USAGE BASIC GUIDELINES

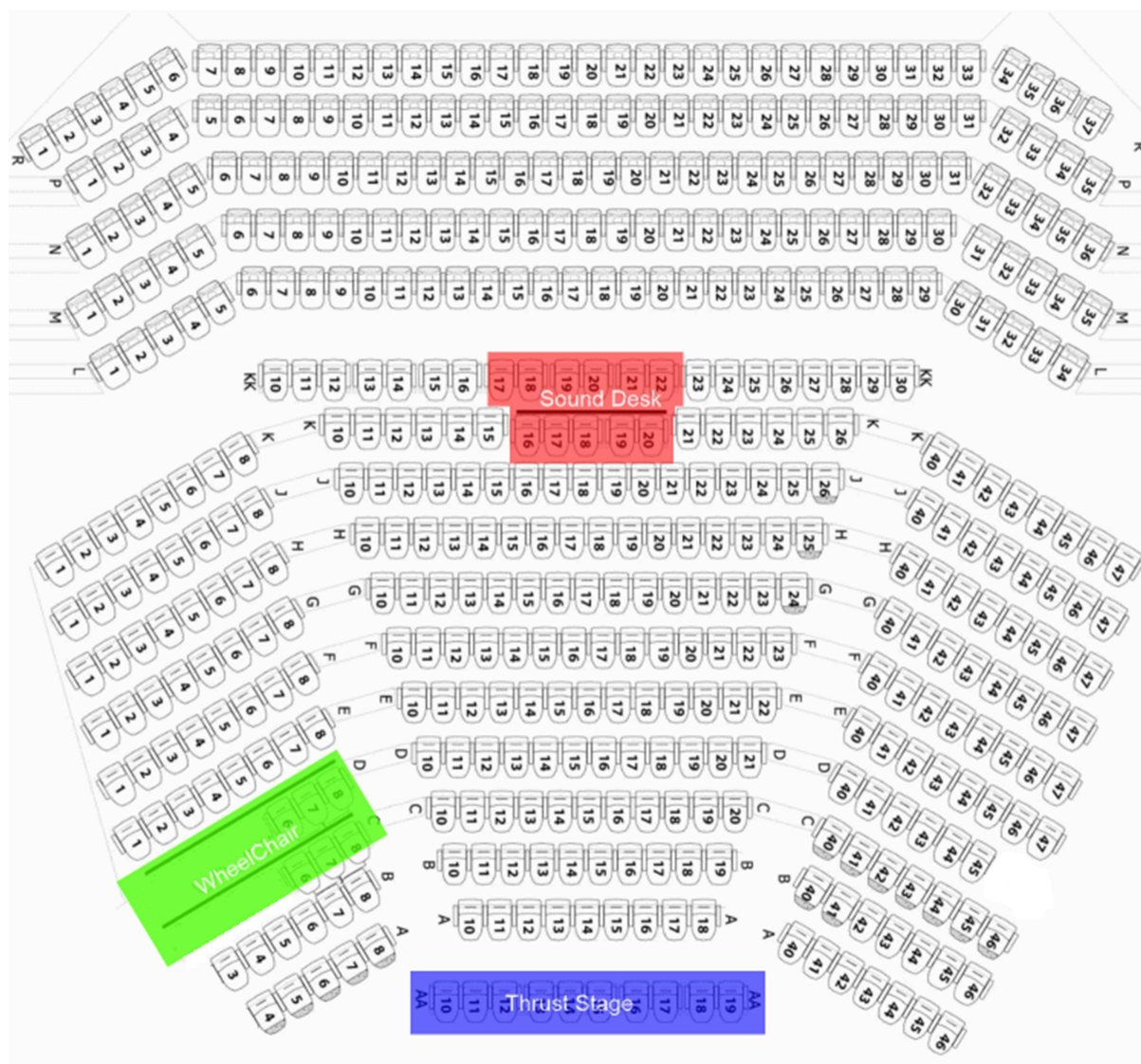
1. Alterations to the structure and fittings of the theatre are prohibited (including painting and drilling of holes into the stage floor without Technical Manager Permission). No painting of scenery or equipment is permitted on stage. Glitter may not be used on scenery, costumes or persons.
2. Lighting and sound desks to be operated by Country Arts SA staff or persons approved by Country Arts SA by prior arrangement only. The Public Health Authority has set a maximum sound level limit of 105 decibels. Country Arts SA has the authority to enforce this ruling.
3. The use of pyrotechnics, smoke machines or naked flames, will only be permitted with the appropriate South Australian licences, and in the presence of a representative of the South Australian Metropolitan Fire Service which will be at the hirer's expense where applicable. No flammable liquids or explosive material may be brought into the premises.
4. All rigging of scenery, lighting etc. must comply with Work Health and Safety, and Department of Industrial Relations Regulations. Country Arts SA may refuse the use of any scenery, lighting, sound or other equipment. Counterweight flying system is not to be used by persons under the age of eighteen years and only by persons approved by Country Arts SA by prior arrangement.
5. Smoking in the theatre is prohibited other than on stage as part of the performance by prior arrangement. No alcohol shall be brought into the premises, other than by prior arrangement. No foodstuffs or liquids may be taken onto the stage, other than as part of the performance by prior arrangement.
6. Corridors surrounding the stage must be kept totally clear of all props and scenery at all times. All performers and backstage crew are to enter the theatre via the stage door. Access is not permitted via the theatre foyer. No persons, other than members of the production crew will be permitted in the auditorium and foyer areas during rehearsals.
7. The theatre is fitted with JLG model 20DVL elevated work platforms to assist in rigging and focussing equipment above the stages. The platforms will elevate to 6 meters above stage level (7.6 meter max working height). People wishing to use these platforms must produce their yellow operator training card as issued by the Elevating Work Platform Association of Australia as proof of competency, before commencing work on these platforms. This must be at least a VL specific licence.
8. Staff must be given a minimum 30 minute break after every 5 hours of work, and consecutive shifts must be a minimum of 10 hours apart. Overtime rates apply after 8 hours of work, between 11:00PM-08:00AM, and anytime Sunday and public holidays.

APPENDICES

APPENDIX 1 VENUE MAP – BASIC LAYOUT



APPENDIX 2 SEATING LAYOUT

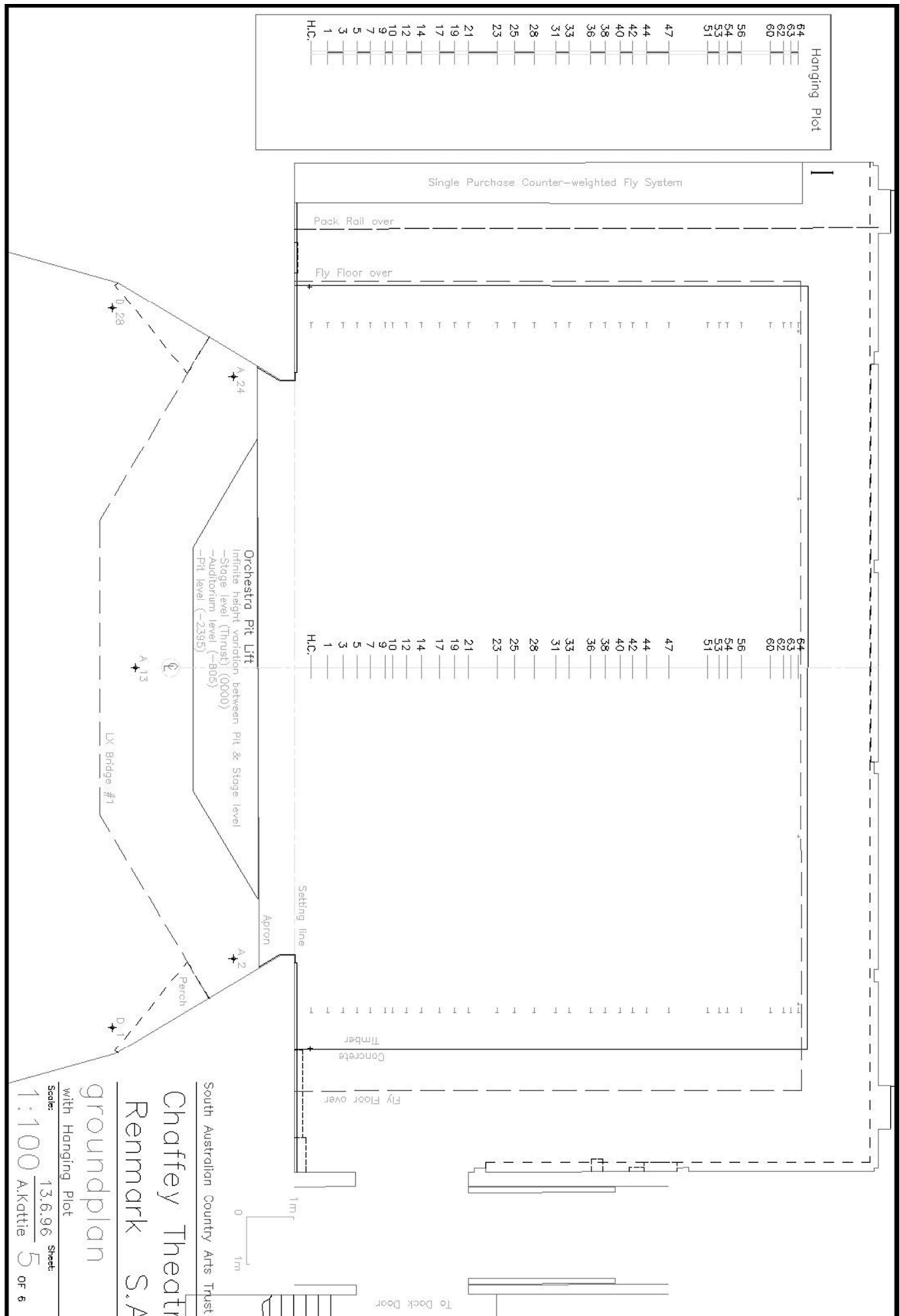


Sound desk and Thrust seats are removable upon request

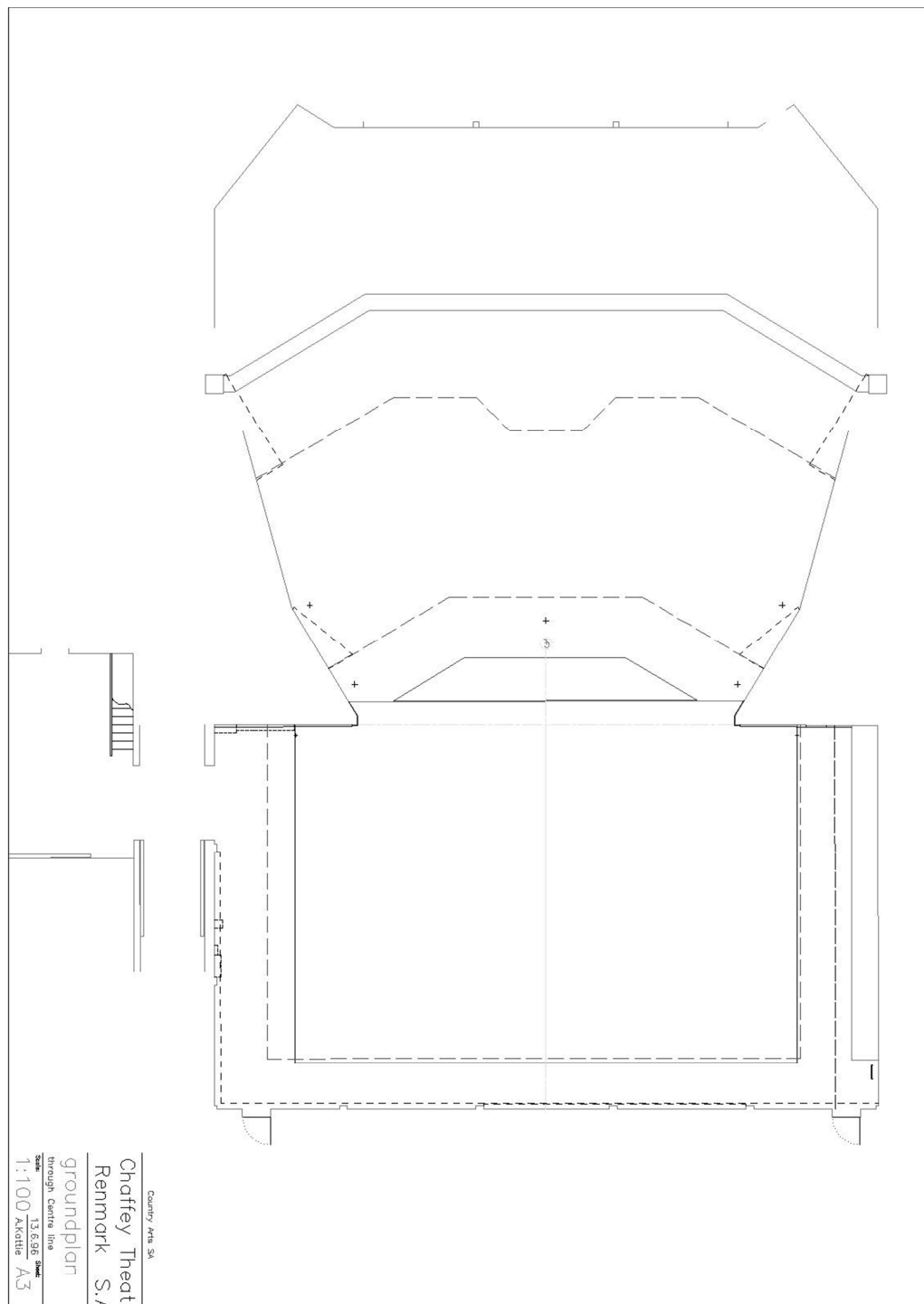
Wheelchair seats are removed upon patron request

APPENDIX 3 VENUE PLANS

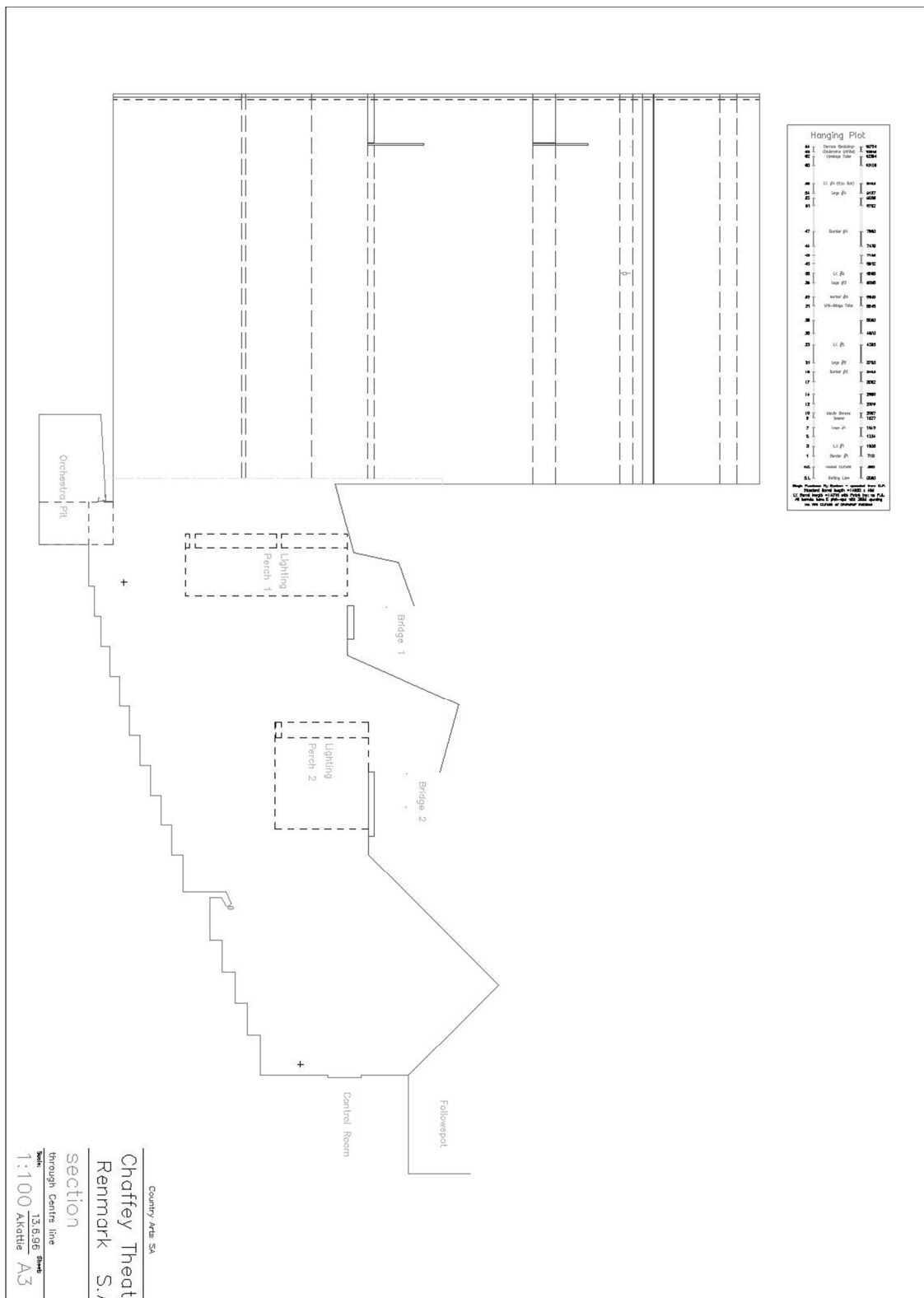
STAGE PLAN



AUDITORIUM AND STAGE PLAN



AUDITORIUM SECTION



APPENDIX 4 STANDARD LIGHTING RIG

