

Northern Festival Centre

incorporating Keith Michell Theatre

TECHNICAL FACILITIES



106 Gertrude Street, Port Pirie, SA 5540

(08) 8633 8500

northern@countryarts.org.au

www.countryarts.org.au

Technical Manager: Paul Schrader

paul.schrader@countryarts.org.au

0427 007 252

Seating

Stalls:	303
Gallery:	192
TOTAL SEATING Capacity	495

Total possible seating with Orchestra Pit or Stage Apron in use: (Minus 9 Seats) (AA1 to AA9)	486
--	-----

Total possible seating with Thrust Stage in use: (Minus 47 Seats – All of AA, BB, CC)	448
---	-----

Total possible seating with Sound Mixer or Lighting Desk in Auditorium: (Minus 8 Seats - J13 to J18 and H29 to H34) (Minus 16 Seats - J9 to J14 and H25 to H30) Note: The number of seats removed depends on the amount of space required.	487 or 479
---	------------

The Theatre can cater for up to 8 Wheelchair Seats (H3 to H15)

(Country Arts SA reserves the right to withdraw from sale for any performance, a maximum of 8 seats.
Therefore above capacities may reduce by 8.)

Proscenium

Fixed Proscenium	Proscenium Width:	12.0m
	Proscenium Height:	7.5m
Adjustable Proscenium (Teaser and Tormentor)	Width Maximum:	12.0m
	Width Minimum:	6.0m
	Height Maximum:	7.5m
	Height Minimum:	4.0m

Stage

Stage Surface:	Stage Surface:	Unraked, Plywood on Timber Bearers with Masonite covering.
	Stage Surround:	Concrete

Stage Dimensions:	Depth: (Stage Front Edge to Rear Wall)	13.1m
	Width: (Including Wings)	21.5m
	PS Wing: (Stage Edge to Wall)	2.3m
	OP Wing: (Stage Edge to Fly Rail)	1.6m
	Height: (To underside of Grid)	18.0m
	(To underside of Fly Gallery)	8.0m
	(Above Auditorium Floor)	0.82m
	(Projection Screen Clearance)	10.8m
	Timber Floor Dimensions: (All Masking Out)	16.7m x 12.5m
	Distance from Front of Stage to House Curtain:	1.3m
	Standard Colour:	Black
Note: Screwing into the Stage Floor is Permitted.		

Orchestra Pit

(Orchestra Pit Cover Removed)

Elliptical in shape.	
Orchestra Pit Cover: (Standard Position is at Auditorium Level). (Timber Boxing Supported on Timber Bearers on short Screw Jacks)	
Floor level:	2.1m below Stage level.
Width at Front:	5.2m
Width at Rear:	12.6m
Depth Front to Rear Under Stage:	4.2m
Balustrade around Auditorium edge of Orchestra Pit	
Approximate Capacity:	35 musicians
Note: Orchestra Pit Cover is not Motorised. (Must be disassembled and reassembled manually).	

Stage Apron

(Orchestra Pit Cover at Stage Level)

Orchestra Pit Cover at Stage Level. (Timber Boxing supported on Timber Bearers on long Screw Jacks).	
Elliptical in shape.	
Floor level:	At Stage level.
Width at Front:	5.2m
Width at Rear:	10.6m
Depth Front to Rear:	1.2m
Infill Panels around Auditorium edge of Apron below Stage	
Note: Orchestra Pit Cover is not Motorised. (Must be disassembled and reassembled manually).	

Thrust Stage

The Thrust Stage consists of a series of Timber Boxes that are placed in front of the Stage. (Plan can be provided on request)
Note: Use of the Thrust Stage requires raising the Orchestra Pit Cover to Stage level (See note about Stage Apron)

Stage Drapes

Tabs (Draw Curtains) (TC.75 heavy duty Steel Truss Construction Stage Track)	8.2m high × 14.4 wide	1 Pair (Black)
Tabs (Currently Not On Track)	8.2m high × 14.4 wide	1 Pair (Black)
Borders	3.5m high × 15m wide	5 (Black)
Legs	8.5m high × 3.3m wide	5 Pair (Black)
Cyclorama	8.0m high × 15m wide	White
House Curtain. (Fire Curtain)	8.2m high × 14.4 wide	Red
Note: House Curtain is also the Fire Curtain and must not be obstructed.		

Dressing Rooms

Number	Capacity	Amenities
1	4	Shower and Toilet
2	4	Shower and Toilet
3	19	Showers and Toilets
4	19	Showers and Toilets

Wardrobe (Work Room)

1 x Ironing Board
1 x Iron
1 x Top Loader Automatic Washing Machine
2 x Front Loader Tumble Dryers
4 x Mobile Wardrobe Racks.
4 x 1500mm x 900mm Work Tables.
40 x Chairs

Rehearsal Room

12.6 metres x 7.8 metres with Sprung Timber Floor.
Two Walls are completely Mirrored.
Ballet Barre fitted to one wall.
Toilet Facilities.
Located on the Upper Level of the Venue.

Schiedmayer & Soehne 5 foot Baby Grand Piano
(Available for use in Rehearsal Room only)

Note: Rehearsal Room use subject to availability. (check availability)

Pianos

Feurich Leipzig Upright Piano (Located in Orchestra Pit)

Wertheim Upright Piano. (For use Onstage and other areas)

KAWAI GS 50 6 foot Baby Grand Piano

(Available for Onstage Performances only)

Lectern

1 x Lectern. (Black Frame with 2 Timber Shelves)

Scene Dock Area

Loading Dock Doors

2.4m wide x 2.6m high Roller Door at Stage Level.

(Allows end loading with direct access to the Stage from Driveway.)

Loading Platform

Concrete Pad. 4m x 2.9m

Loading Platform Height

1120mm above ground level

Rostra

Quantity	Height	Length	Width
6	300mm x	2400mm x	1200mm
6	600mm x	2400mm x	1200mm
6	900mm x	2400mm x	1200mm
2 x Sets of Treads			
Note: 300mm Rostra subject to availability. (check availability)			

Machinery

Single Purchase Counterweight System	36 Lines
Barrel-length	15.0m
Number of Dropper Cables per Barrel	5
Cradle Capacity	350kg
Fly Rail Operation Position:	Opposite Prompt
House Curtain Operation:	Fly Only
Note: Line 14 is occupied by the Cinema Projection Screen which cannot be moved. Line 15 runs very close to the back of the Projection Screen and will need to be Brailled if Flying Elements are to be attached to this Line.	
Note: There is a No Go Zone marked out on Fly Rail Side of Stage (OP), This area must be kept clear when Counterweights are being moved.	

Elevating work platform

The Theatre is fitted with GENIE GR20 Elevating Work Platform to assist in rigging and focussing Equipment above the Stage level.

(Persons wishing to use this Platform must produce their Operator Training Card as issued by the Elevating Work Platform Association of Australia as proof of training before commencing work on the Platform.)

Lighting Equipment

Lighting Positions

5 x On Stage Lighting Bars

- LX1 (30 LX Sockets) – Sub Patch on PS Fly Gallery
- LX2 (30 LX Sockets) – Sub Patch on PS and OP Fly Gallery
- LX3 (30 LX Sockets) – Sub Patch on PS Fly Gallery
- LX4 (30 LX Sockets) – Sub Patch on PS and OP Fly Gallery
- LX5 (Cyc Bar)(10 Sockets – Sub Patch on PS Fly Gallery
- GPO's also available on Fly Gallery

2 x FOH Lighting Bridges

- Bridge 1 (30 LX Sockets + 3 GPO)
- Bridge 2 (30 LX Sockets + 7 GPO)

6 x FOH Lighting Perches

- 3 x PS each with 3 hanging Rails (Each has 4 LX Sockets + 1 GPO)
- 3 x OP each with 3 hanging Rails (Each has 4 LX Sockets + 1 GPO)

6 x Stage Floor Traps

- 3 x PS (Each has 4 LX Sockets + 1 GPO)
- 3 x OP (Each has 4 LX Sockets + 1 GPO)

Stage Level Lighting Options

- 10 x Portable Lighting Boom Poles
- 30 x Boom Arms
- 18 x H Stands

DMX Distribution:

Cat5e (Shielded) via 4 x LSC 10-way MDR Splitters and 2 x RJ45 Patch Bays.

4 x Universes via ETC Net3 (A, B,C and D) with 5 Pin XLR Sockets.

DMX Distribution Positions

- FOH LX Bridge 1
- FOH LX Bridge 2
- Stage Level DSP
- Stage Level DSOP
- PS Loading Gallery x 5

DMX Input Positions

- Control Room
- Auditorium (Rear of Stalls)
- Stage Level DSP

Follow Spot Positions

Follow Spots are located in the Control Room

House Light Control Positions

- Control Room x 4
- Auditorium (Rear of Stalls). (Removable)
- Auditorium (Entry 1 Lower Airlock – OP)
- Auditorium (Entry 2 Lower Airlock – PS)
- Stage Level (DSP)
- Front of House Office

Dimmers

- 48 x Strand Mini Pack 5Kw Dimmers (Channels 1 to 48)
- 24 x Strand Mini Pack 2Kw Dimmers (Channels 49 to 72)
- 12 x Strand Mini Pack 2Kw Dimmers (Channels 73 to 84)

Note: 12 x Strand Mini Pack 2Kw Dimmer Rack (73 to 84) is subject to availability. (check availability)

LX Patching

- 200 LX Circuits located around venue terminating in Dimmer Room. (Direct connection to Dimmers via 3pin Plug) (See Drawing at the end of this Document for locations)

Lighting Control Consoles

- 1 x ETC Ion Lighting Control Console with Fader Wing
- 1 x ETC Microvision FX Lighting Control Console (DMX512) (Capable of 125 channels)
- 1 x Jands ESPII 48 Lighting Control Console (DMX 512) (96 channels in wide mode)

Lighting Fixtures

- 12 x Martin Mac Aura XB LED moving Wash
- 20 x ETC Source 4 Lustr2 LED 26° Profiles
- 4 x ETC Source 4 Lustr2 LED 19° Profiles
- 12 x ETC Colorsource LED CYC Fixture
- 8 x Martin Mac Quantum LED moving Profiles
- 20 x CCT Silhouette 15° 1000 W Profiles
- 19 x CCT Silhouette 30° 1000 W Profiles
- 50 x CCT Starlette 1000 W Fresnels
- 6 x CCT 650 W Minuette Profiles
- 6 x CCT 650 W Minuette Fresnels
- 5 x CCT 500 W Minuette Cyc Floods
- 5 x CCT 1000 W Iris 4 Cyc Floods

Follow Spots

- 2 x Robert Juliat OZ LED Followspots

Lighting – Special Effect

- 1 x 500mm Mirror Ball with Motor.
- 1 x Strobe Light (Not DMX controlled).
- 2 x UV Fluro Lamps.
- 1 x Lightwave F100 Smoke Machine (Not DMX controlled).
- 1 x Antari HZ-350 Haze Machine (DMX controlled).

Sound Equipment

Analogue Sound Mixer

- 1 x Soundcraft Series Two Mixing Console. (24 Input Channels / Stereo Left and Right Out / Mono Out / 8 Aux Sends).
- (Standard Configuration - 4 sends (2 x FOH / 2 x Foldback).

Digital Sound Mixer	<p>1 x Roland M-400 Digital Live Mixing Console (48 Input Channels / Stereo Left and Right Out / 6 Aux Sends)</p> <p>Full specs: http://www.roland.com/products/en/M-400/specs.html</p>
Digital Multicore	<p>1 x Roland S-4000 Digital Snake (32 Input Channels / 8 Sends)</p> <p>Full specs: http://www.roland.com/products/en/S-4000S-208/specs.html</p>
Sound Processor	<p>1 x DBX DriveRack PA2 Loudspeaker Management System.</p>
Digital Audio Lines	<p>Cat6 - 2 x Streams (A and B) with Ethercon Sockets.</p>
Digital Audio Line Positions	<ul style="list-style-type: none"> • DSP to Control Room • DSOP to Control Room • Control Room to Auditorium (Rear of Stalls)
Playback Equipment	<ul style="list-style-type: none"> • 2 x Denon DN680 CD player (Not CDRW compatible) • 1 x Panasonic DVD Player • 1 x Denon BluRay Player • 1 x Denon Cassette Player
Amplifiers (Main Amp Rack)	<ul style="list-style-type: none"> • 1 x Yamaha P-2200 Professional Series (2 Channel Amplifier). (FOH) • 1 x Crown XLS 602 (2 Channel Amplifier). (Subs) • 2 x Yamaha P-2200 Professional Series. (2 Channel Amplifier). (F/Back) • 2 x Yamaha P-2201 Professional Series. (2 Channel Amplifier). (F/Back) <p>Note: Amplifiers are located at Stage level DSOP.</p>
Additional Amplifiers (Spare Amp Rack)	<ul style="list-style-type: none"> • 3 x Jell JMA-900 Power Amplifiers. (2 Channel Amplifier)
Speakers - FOH	<ul style="list-style-type: none"> • 2 x Bose 802 Professional Loudspeaker (3 Pin XLR) located behind Mesh Panels above lower Doors in Auditorium • 2 x Bose 802 Professional Loudspeaker (3 Pin XLR) located above centre Ceiling Panels in Auditorium near Proscenium Arch • 2 x Bose 302 Sub Woofers (3 Pin XLR)
Speakers - Foldback (Wedges)	<ul style="list-style-type: none"> • 4 x Bose 620M Panaray Foldback Monitors (Speakon Connectors) • 2 x Bose 802 Professional Loudspeaker (3 Pin XLR) • 4 x Etone Wedges (4 Pin XLR) • 3 x Panasonic Ramsa WS-AT300E (Speakon Connectors)
Special Effects Rack	<ul style="list-style-type: none"> • 1x Yamaha Digital Delay D1500 • 1 x Yamaha Digital Reverb R1000 • 3 x Yamaha Q1027 Graphic Equalizer

Microphones

- 2 x Beyer Dynamic 700
- 6 x Beyer Dynamic M88TG
- 5 x AKG 330BT
- 1 x Beyer Dynamic M380
- 9 x Shure SM58 LCE
- 4 x Shure Beta 58A
- 6 x Shure KSM109 Condenser Microphones
- 6 x Shure EZO/G Easyflex Overhead Microphones
- 4 x Shure MX393/0 Boundary Microphones
- 4 x Rode HS2-P Headset Microphones
- 2 x PZM Plate Microphones

Wireless Microphone System

- 1 x Shure ULX-D Wireless Radio Microphone System
(4 x SM58 Hand Held Mics / 4 x Belt packs with 4 x Rode Headset Mics)

Direct Inputs (DI's)

- 4 x BSS AR-133 Active DI's. Phantom or Battery. Pad: 0dB; 20dB; 40dB
- 4 x Jands High quality passive DI's. Parallel inputs (TRS balanced) Output XLR 150 Ohms. Ground Lift.

Microphone Cables

Various length Microphone Cables are available for use.

Microphone Stands

- 20 x Microphone stands of various sizes with boom arms.
- 5 x Round Base Microphone Stands

Multicores

- 2 x Jands XLR 16 + 4 Stage Box 30 metres
- 1 x Jands XLR 12 Stage Box 12 metres

Please Note:

This Venue is unable to provide Backline Audio Equipment / Instruments and there is no Local Supplier in Port Pirie.

Power Distribution

Power Distribution

- 2 x 32amp 415volt 3 Phase Outlets at Stage Level (Prompt Side)
- 2 x 63amp 415volt 3 Phase Outlets at Stage Level (Prompt Side)
(Splitter available to convert 1 of these to 2 x 32amp Outlets)
- 1 x 32amp 415volt 3 Phase Outlet in Scene Dock
- 2 x 32amp 415volt 3 Phase Outlets in Dimmer Room
- 1 x 32amp 415volt 3 Phase Outlet in Ballroom
- 1 x 32amp 415volt 3 Phase Outlet in Control Room

- 1 x 40 metre 3 Phase Extension Lead

Note: All 3 Phase Outlets are RCD Protected

Projection Equipment

Data projector

1 x Sony VPL - PX40 LCD Data Projector
3500 ANSI Lumens / Resolution 1024 x 768

(Fitted with Long Throw Lens) (Mounted on Stand in Control Room)

Cinema Projection Equipment

Digital Cinema Projection Equipment

Christie CP2200 DLP Projector Doremi Showvault DCP-2K4 Cinema Server Gefen AV Cinema Scaler Pro II attached to provide input from DVI / HDMI / Component / Composite / VGA (AV) devices Configured for use on Cinema Screen or Cyclorama.
--

3D Cinema

RealD 3D XL Mover (For use on Cinema Screen only)

Cinema Sound

Installed QSC 5.1 or 7.1 Surround Sound

Note: Due to excessive Noise Levels, the Cinema Projection Equipment cannot be operated with the Control Room Windows open. Lighting and Sound Consoles must be moved to the Auditorium Mix Position.
--

Stage Management Control System

Stage Managers Console is located stage left (Prompt Side) with Headset talkback to all Operator positions. (Control Room Lighting and Sound / Follow Spot Booth x 2 / Auditorium Mix Position / Fly Rail / Spare Headsets available for use in other areas).

Stage Sound Relay and Cast Call Paging to all Cast and Production Areas.

Warning Bell System to Foyer and public areas controlled from Front of House Office, Control Room, Candy Bar and Side Stage.

Please Note:

Local Television Stations are on UHF frequencies 590mHz to 650mHz. Radio Microphones should be set on channels above these frequencies if possible.

Standard Rig

The Theatre is hired in a standard configuration for Lighting, Sound, Masking and Fly Lines. (See Plans below)

This includes:

- Standard Lighting Rig with standard 5 Colours (Red (R26), Blue (R79), Amber (R21), OW)..
- The Stage Apron at Auditorium Floor level with Seats in.
- Stage Floor colour – Black.
- Stage area clear, clean and tidy.

Any variation to the standard configuration will be made at the Hirer's expense and returned to the standard configuration at the Hirer's expense. The Theatre must be informed in writing at least two weeks prior to the bump in of any change you wish to make to the Standard Rig.

Theatre Usage Guidelines

- Alterations to the structure and fittings of the Theatre are prohibited (including painting and drilling of holes into the stage floor. Screwing Sets to the Stage Floor is permitted.). No painting of Scenery or Equipment is permitted on Stage. Glitter may not be used on Scenery or Costumes.
- Lighting and Sound Consoles are to be operated by Country Arts SA staff or by persons approved by Venue Technical Manager by prior arrangement only. The Public Health Authority has set a maximum sound level limit of 105 decibels. Country Arts SA has the authority to enforce this ruling.
- The use of Pyrotechnics, Smoke Machines (this includes Hazers, Foggers Etc) or Naked Flames (other than dry ice), will only be permitted with the appropriate South Australian Licences, and in the presence of a representative of the South Australian Metropolitan Fire Service which will be at the Hirer's expense. No Flammable Liquids or Explosive Material may be brought into the premises.
- All rigging of Scenery, Lighting etc. must comply with Occupational Health, Safety and Welfare Regulations, and Department of Industrial Relations Regulations. Country Arts SA may refuse the use of any Scenery, Lighting, Sound or other Equipment. The Counterweight Flying System is not to be used by persons under the age of eighteen years of age and only by persons approved by Venue Technical Manager by prior arrangement.
- Smoking in the Theatre is strictly prohibited other than on Stage as part of the performance by prior arrangement. No Alcohol shall be brought into the premises, other than by prior arrangement. No Foodstuffs or Liquids may be taken onto the stage, other than as part of the performance by prior arrangement.
- Corridors surrounding the Stage must be kept totally clear of all Props and Scenery at all times. All Performers and Backstage Crew are to enter the Theatre via the Stage Door. Access is not permitted via the Theatre Foyer. No persons, other than members of the Production Crew will be permitted in the Auditorium and Foyer areas during rehearsals.
- The Theatre is fitted with GENIE GR20 elevated work platform to assist in rigging and focussing equipment above the stage. The platform will elevate to 20 feet above stage level (25 foot max working height). People wishing to use these platforms must produce their yellow Operator Training card as issued by the Elevating Work Platform Association of Australia as proof of training, before commencing work on these platforms.

Please Note:

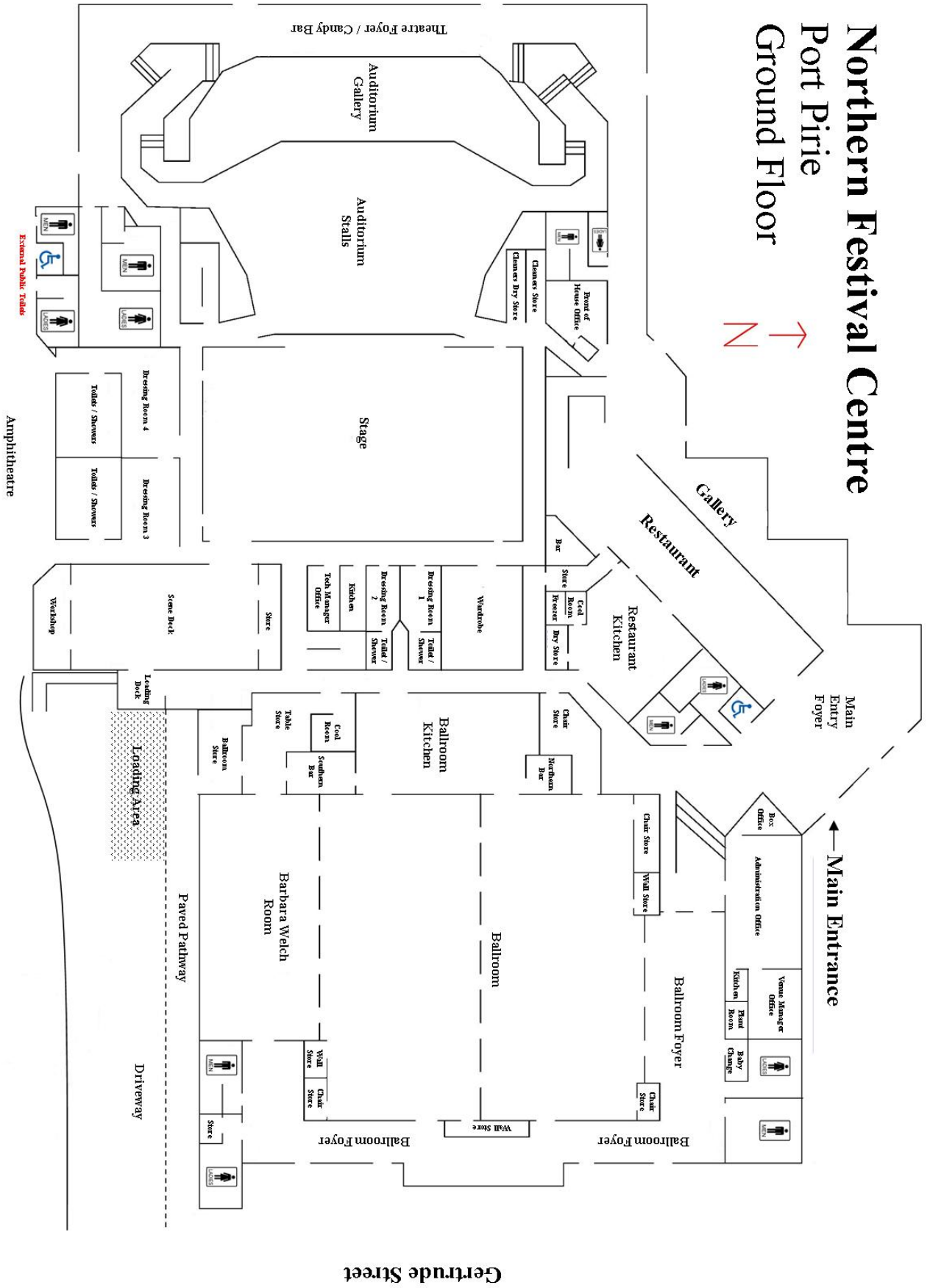
This Venue is unable to provide Backline Audio Equipment / Instruments and there is no Local Supplier in Port Pirie.

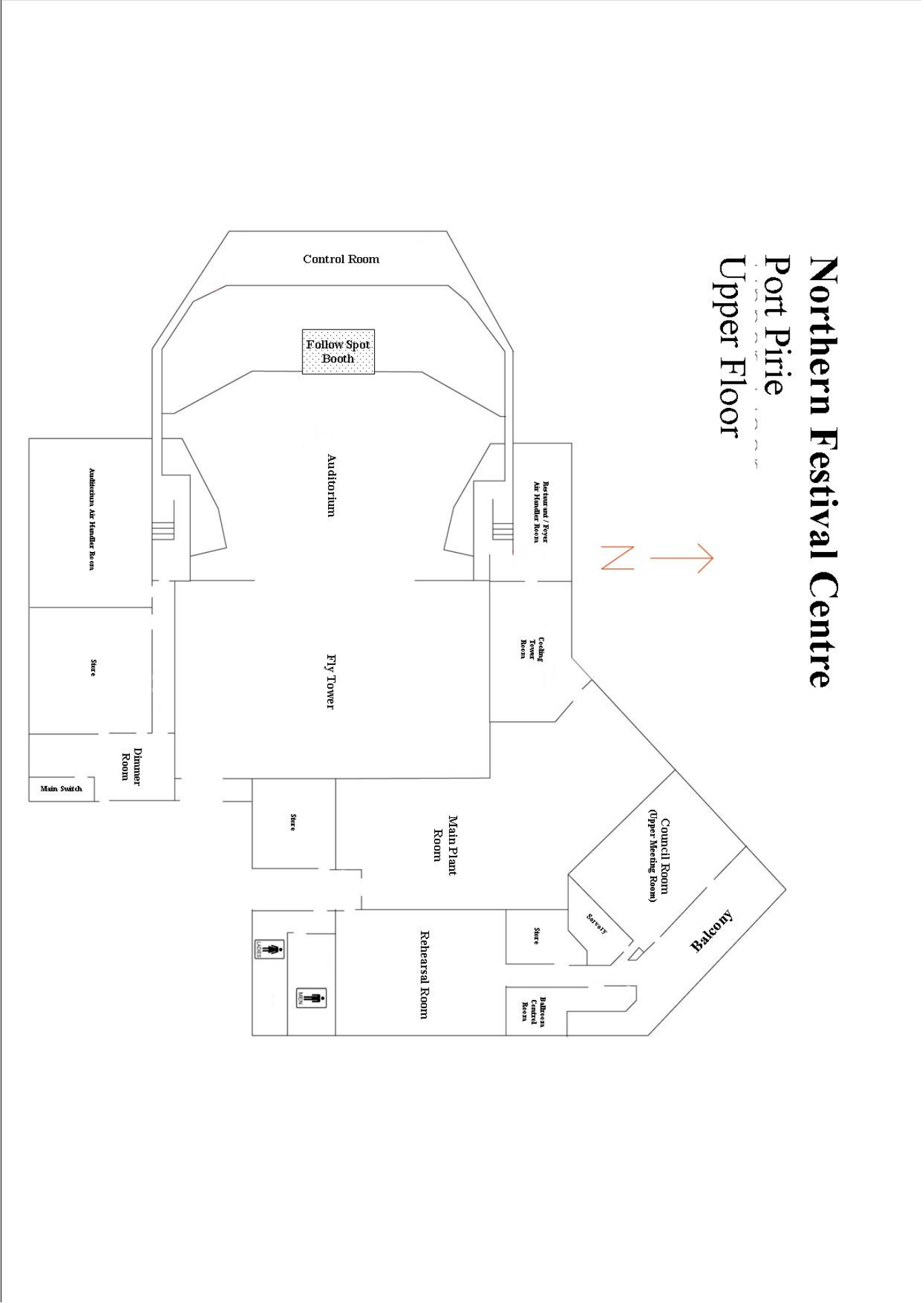
For technical advice please contact the Theatre on 08 8633 8500 or Technical Manager on 0427 007 252

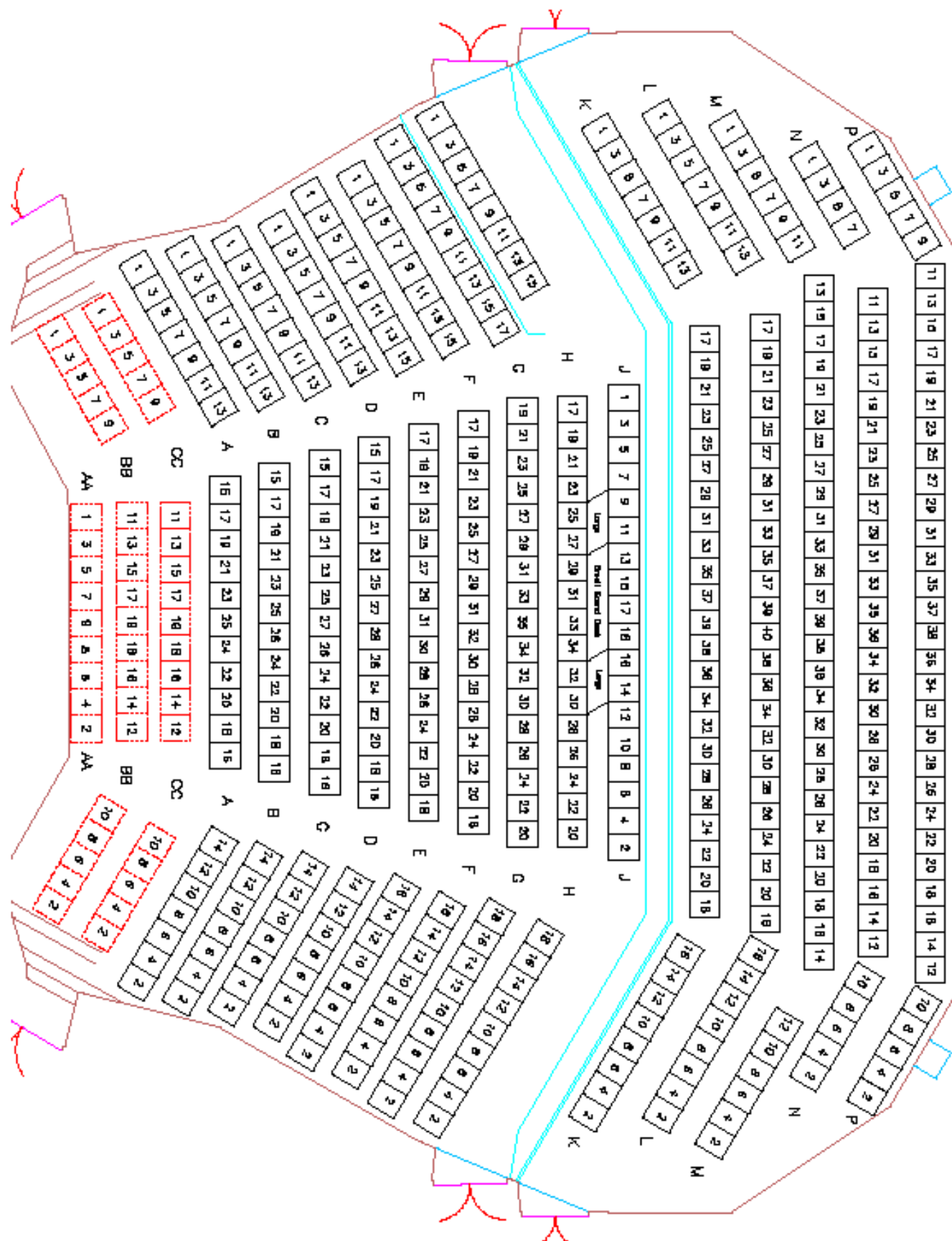
KEITH MICHELL THEATRE - STANDARD HANGING PLOT

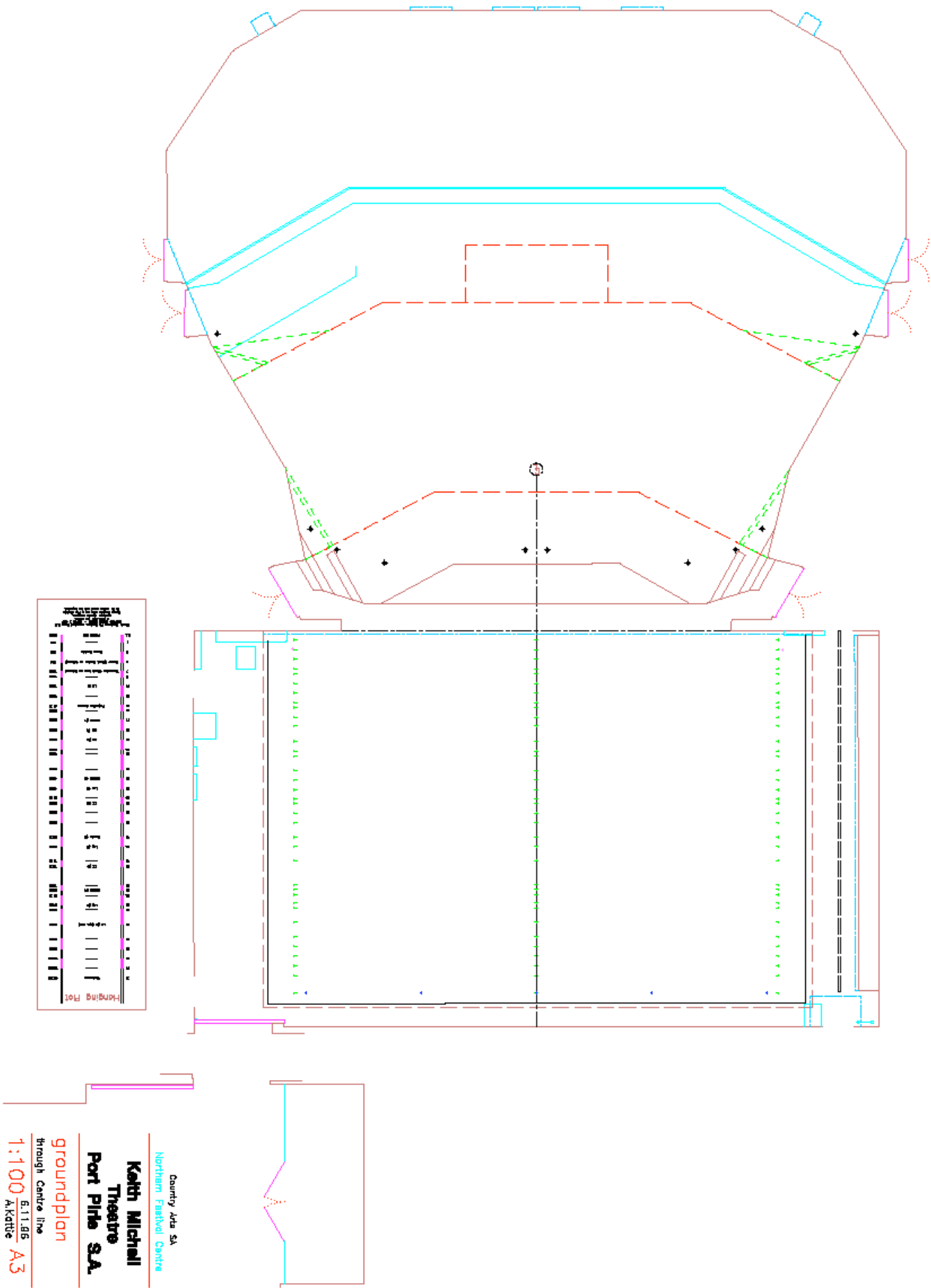
LINE NO.	DESCRIPTION	DISTANCE FROM INSIDE PROSCENIUM WALL (Stage Edge)	WEIGHTS FOR STANDARD RIG
1	SPARE	220 mm (1020mm)	2 x 15kg
3	HOUSE TABS (House Curtain)	520 mm (1320mm)	2 x 15kg + 8 x 15kg
5	TEASER	820 mm (1620mm)	2 x 15kg + 3 x 15kg
7	TORMENTOR	1120 mm (1920mm)	2 x 15kg + 3 x 15kg
8	SPARE	1270 mm (2070mm)	2 x 15kg
10	LX 1 (1 x Nightlight / 12 x Fresnels / 4 x 30° Profiles)	1570 mm (2370mm)	8 x 15kg + 5 x 15kg
12	SPARE	1870 mm (2670mm)	2 x 15kg
14	PROJECTION SCREEN (Not Movable To Any Other Line)	2170 mm (2970mm)	2 x 15kg + 17 x 15kg
15	SPARE	2320 mm (3120mm)	2 x 15kg
17	BORDER 1	2620 mm (3420mm)	2 x 15kg + 3 x 15kg
19	LEG 1	2920 mm (3720mm)	2 x 15kg + 3.5 x 15kg
22	LX 2 (12 x Fresnels / 2 x 30° Profiles)	3370 mm (4170mm)	8 x 15kg + 8 x 15kg
24	SPARE	3670 mm (4470mm)	2 x 15kg
25	SPARE	3820 mm (4620mm)	2 x 15kg
28	SPARE	4270 mm (5070mm)	2 x 15kg
30	BORDER II	4570 mm (5370mm)	2 x 15kg + 3 x 15kg
32	LEG II	4870 mm (5670mm)	2 x 15kg + 3.5 x 15kg
34	SPARE	5170 mm (5970mm)	2 x 15kg
35	LX 3 (14 x Fresnels)	5320 mm (6120mm)	8 x 15kg + 7.5 x 15kg
37	SPARE	5620 mm (6420mm)	2 x 15kg
39	SPARE (Standard Position For Tabs 1)	5920 mm (6720mm)	2 x 15kg
42	BORDER III	6370 mm (7170mm)	2 x 15kg + 3 x 15kg
44	LEG III	6670 mm (7470mm)	2 x 15kg + 3.5 x 15kg
47	SPARE	7120 mm (7920mm)	2 x 15kg
48	LX 4 (14 x Fresnels)	7270 mm (8070mm)	8 x 15kg + 7.5 x 15kg
52	SPARE	7870 mm (8670mm)	2 x 15kg
53	BORDER 4	8020 mm (8820mm)	2 x 15kg + 3 x 15kg
54	SPARE	8170 mm (8970mm)	2 x 15kg
56	LEG IV	8470 mm (9270mm)	2 x 15kg + 3.5 x 15kg
57	SPARE	8620 mm (9420mm)	2 x 15kg
60	LX 5 (CYC Bar) (5 x Iris 4 Cyc Units)	9070 mm (9870mm)	8 x 15kg + 10 x 15kg
63	SPARE	9520 mm (10320mm)	2 x 15kg
65	SPARE	9820 mm (10620mm)	2 x 15kg
67	SPARE	10120 mm (10920mm)	2 x 15kg
69	SPARE (Standard Position For Tabs 2)	10420 mm (11220mm)	2 x 15kg + 11 x 15kg
71	CYCLORAMA	10720 mm (11520mm)	2 x 15kg + 3 x 15kg
	TABS 1 (Movable - Standard Position – Line 39)		2 x 15kg + 11 x 15kg
	TABS 2 (Movable - Standard Position – Line 69)		2 x 15kg + 11 x 15kg
Apron edge to inside Proscenium Arch 800 mm		Tormentor opening 11 m (adjustable)	
Projection Screen stage clearance 11780 mm		Gauze and Tabs are movable to any spare bar	
Proscenium Width: 12 m / Proscenium Height: 7.5 m			
LX Bar Only (7 x 15kg Weights) / LX Bar + Loom (8 x 15kg Weights) / Barrel Only (2 x 15kg Weights)			
The weights marked in Red counter balance the weight of the empty bar and should not be removed.			
Counter Weights: Large: 30 kg / Medium: 15 kg / Small: 7.5 kg			

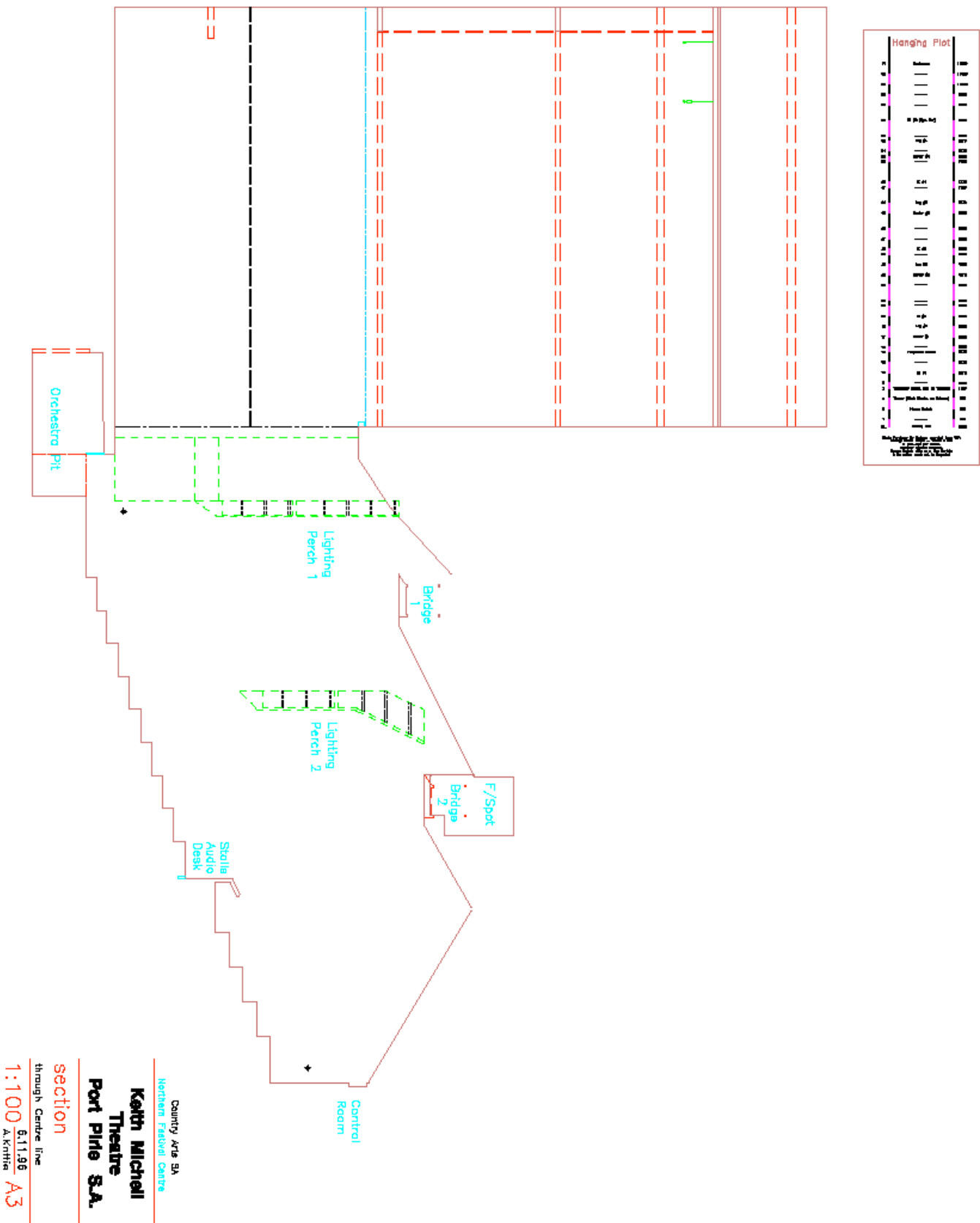
Northern Festival Centre Port Pirie Ground Floor

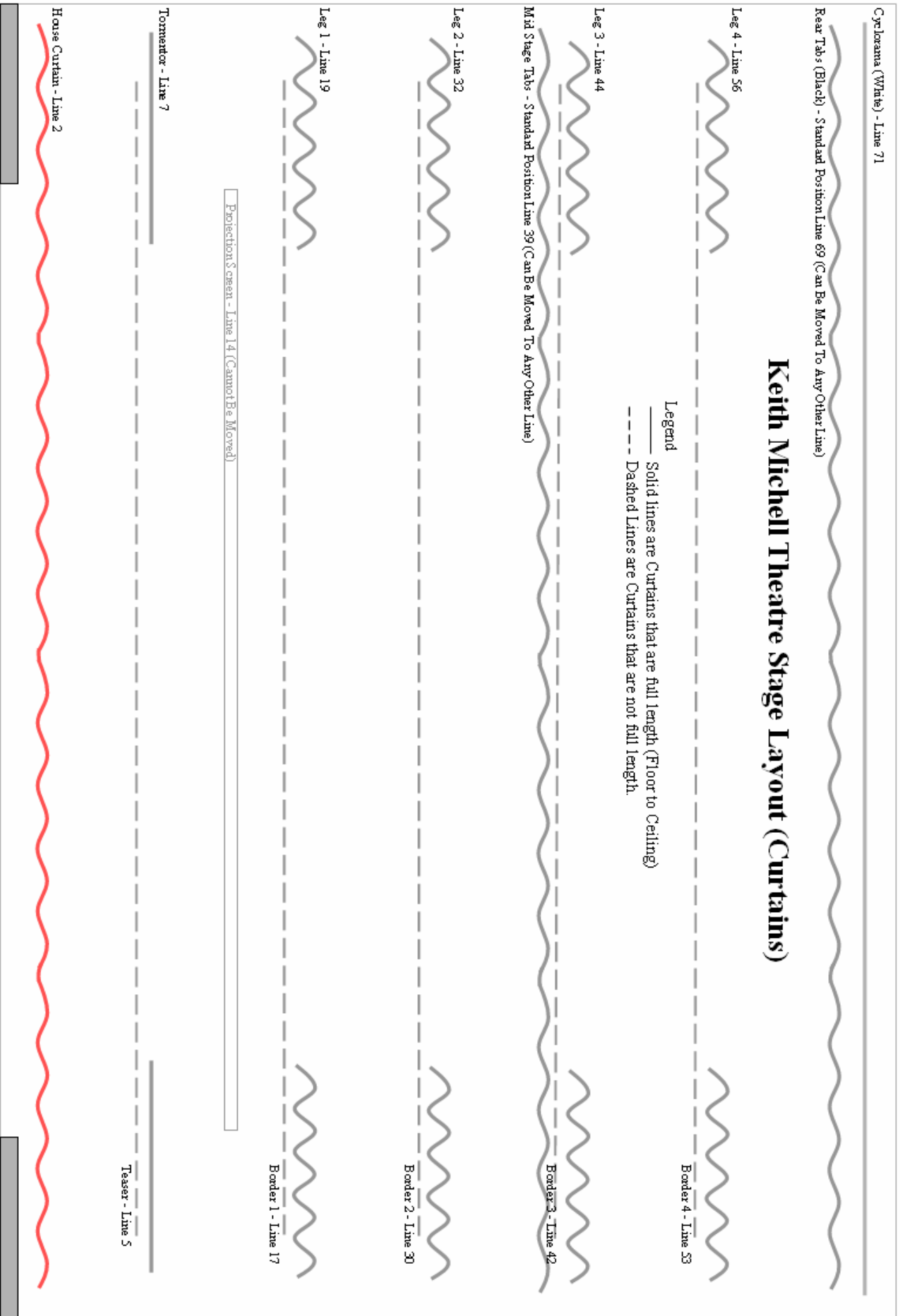




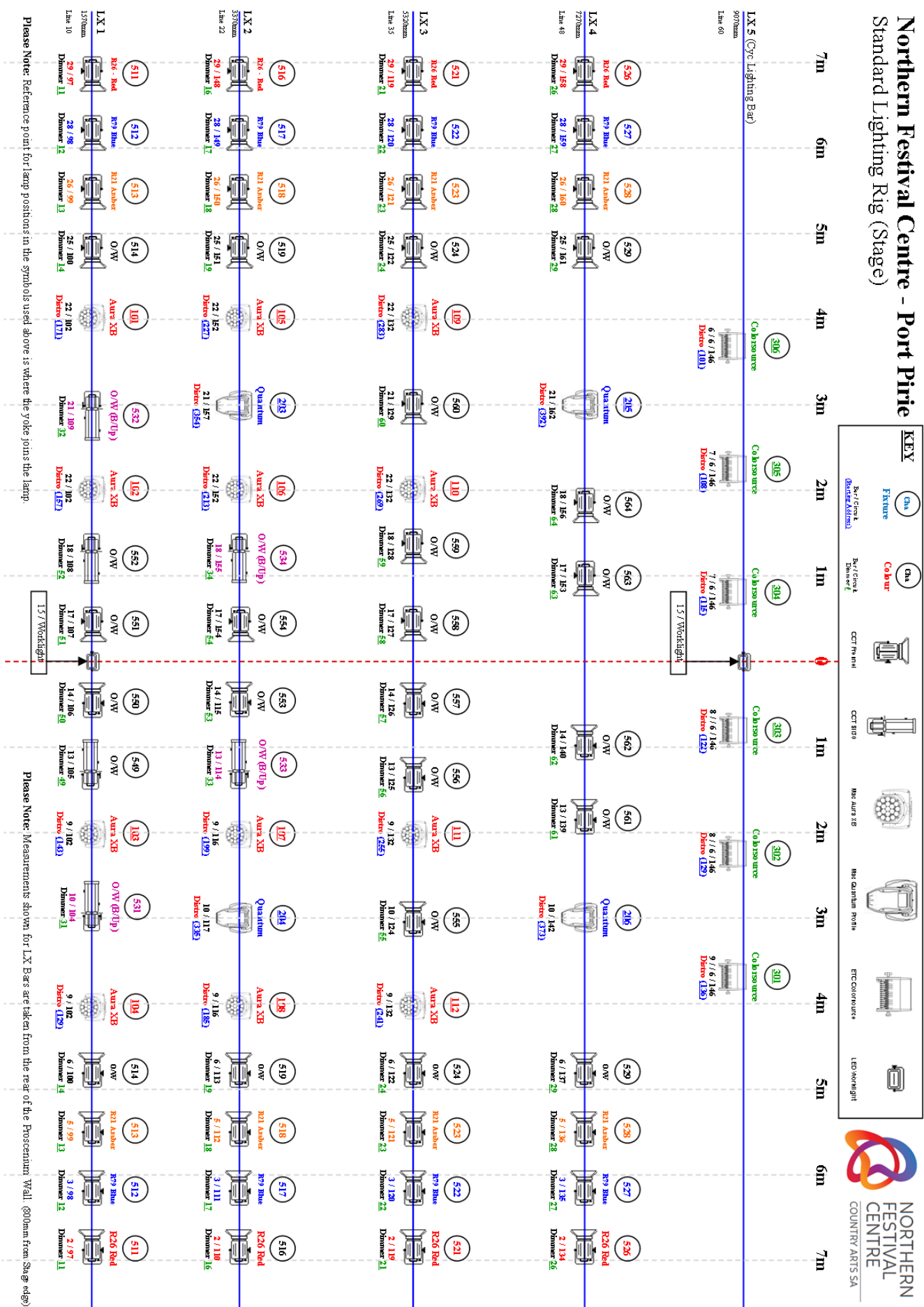






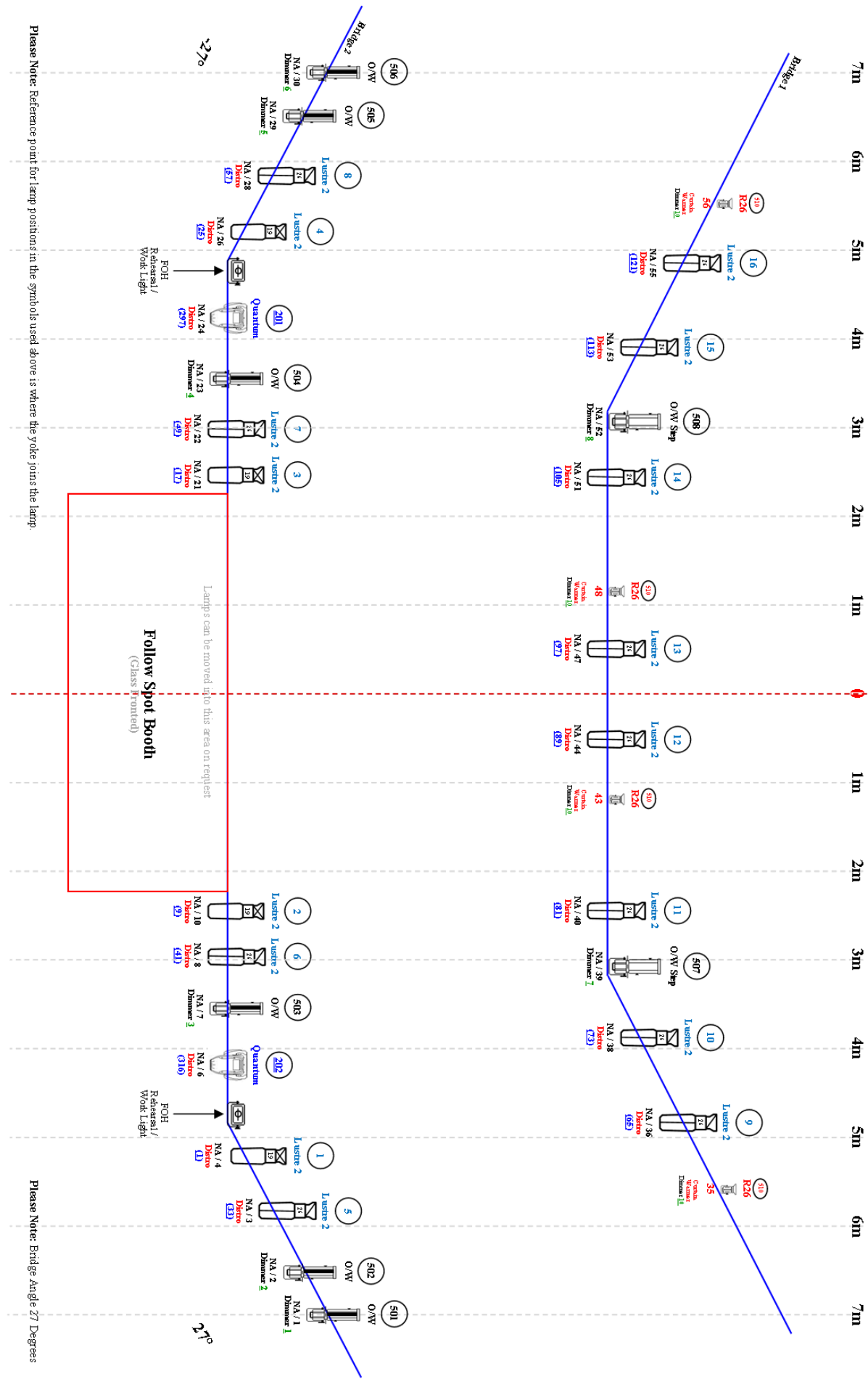


Northern Festival Centre - Port Pirie



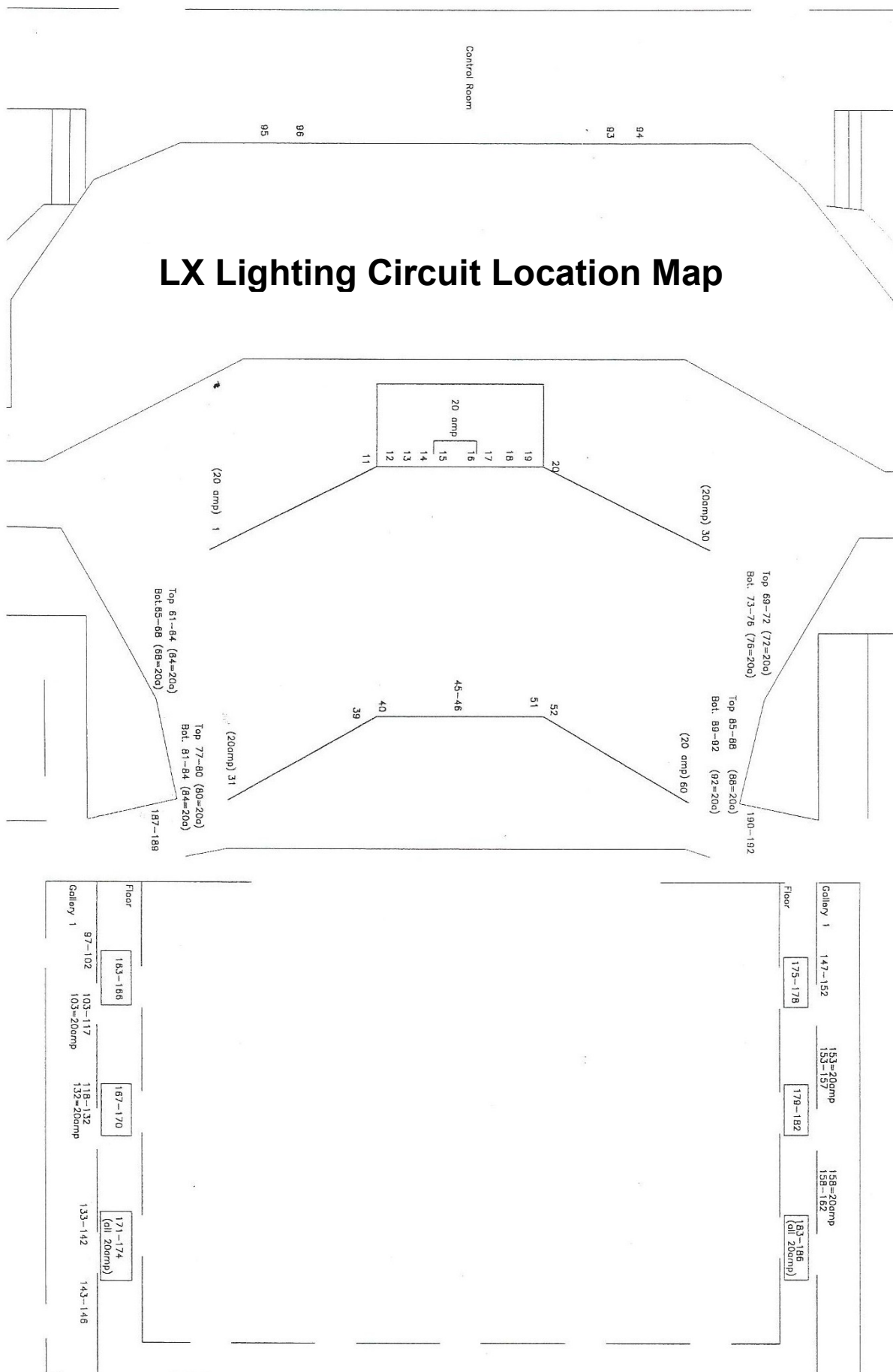
Keith Michell Theatre - Port Pirie Standard Lighting Rig (FOH)

KEY	
	Fixture
	Colour
	CCT 8180
	CCT 8115
	CCT 8180
	ETC LuHw2
	ETC LuHw2
	Mic Datum Profile
	Video Hologram



Please Note: Reference point for lamp positions in the symbols used above is where the yoke joins the lamp.

Please Note: Bridge Angle 27 Degrees



Images taken from Google Maps

