

Northern Festival Centre

incorporating Keith Mitchell Theatre

TECHNICAL FACILITIES



106 Gertrude Street, Port Pirie, SA 5540.

(08) 8633 8500

northern@countryarts.org.au

www.countryarts.org.au

Technical Manager: Paul Schrader

paul.schrader@countryarts.org.au

0427 007 252

Seating

Seating Capacity - Stalls:

303

Seating Capacity - Gallery:

192

TOTAL SEATING Capacity: (All Seats available). (Please refer to Appendix #8 for Seating Plan).

495

Total possible seating capacity with Sound Mixer or Lighting Console in Auditorium:

- Small Desk - Minus 8 Seats (J13, J15, J17, J18 / H29, H31, H33, H34).
(Sound or Lighting Console in Auditorium) (Table size: 1500mm x 740mm).

Sm. 487

Total possible seating capacity with Sound Mixer and Lighting Console in Auditorium:

- Large Desk - Minus 16 Seats (J9, J11, J13, J15, J17, J18, J16, J14 / H25, H27, H29, H31, H33, H34, H32, H30).
(Sound and Lighting Consoles in Auditorium) (Table size: 2 x 1500mm 740mm).

Lg. 479

Note: The number of seats removed depends on the amount of space required.

Note: Seating capacity is further reduced if any of the following are in use.

Total possible seating capacity with Orchestra Pit or Stage Apron in use:

- Minus 9 Seats (AA1, AA3, AA5, AA7, AA9, AA8, AA6; AA4, AA2).

If Mix Position Not used. 486

Mix Position Used. Sm. 478 / Lg. 470

Total possible seating capacity with Full Thrust Stage in use:

- Minus 47 Seats (All of Row's AA, BB, CC).

If Mix Position Not used. 448

Mix Position Used. Sm. 440 / Lg. 432

Note: Number of seats removed depends on how much of the Thrust is setup.

The Theatre can cater for up to 8 Wheelchair Seats. (H1, H3, H5, H7, H9, H11, H13, H15).

Country Arts SA reserves the right to withdraw from sale for any performance, a maximum of 8 seats. Therefore, the above capacities may be reduced by 8.

Proscenium

Fixed Proscenium:

Proscenium Opening Width:	12.0m
Proscenium Opening Height:	7.5m
Proscenium Construction Material:	Reinforced Concrete
Proscenium Wall Thickness:	300mm

Soft Proscenium:

(Teaser and Tormentor).
(Adjustable).

Width Maximum:	12.0m
Width Minimum:	6.0m
Height Maximum:	7.5m
Height Minimum:	4.0m

Stage

Stage Surface:

Stage Rake:	Unraked
Stage Surface:	130mm x 30mm Tongue and Groove Pine Boards fixed to Pine Timber Bearers with Masonite covering on a reinforced Concrete base
Stage Floor Loading:	7.5 Kpa. (750 kgf per m ²)
Stage Floor Colour:	Black
Stage Surround:	Concrete
Stage Surround Colour:	Theatre Grey

Stage Area Dimensions:

Depth:	(Stage Front Edge to Rear Wall).	13.1m
Width:	(Including Wings).	21.5m
	PS Wing: (Timber Floor Edge to Wall).	2.3m
	OP Wing: (Timber Floor Edge to Fly Rail).	1.6m
Height:	(To underside of Grid).	18.0m
	(To underside of Lower Fly Gallery).	8.0m
	(Above Auditorium Floor).	0.82m
	(Clearance to bottom Of Projection Screen).	10.8m
Timber Floor Dimensions: (All Masking Out).		16.7m x 12.5m
Distance from front of Stage to inside face of Proscenium Wall: (Setting Line).		0.83m
Distance from front of Stage to House Curtain:		1.3m
Note: Screwing into the Stage Floor is Permitted.		

Orchestra Pit:

(Orchestra Pit Cover Removed)

Orchestra Pit Cover: (Standard Position is at Auditorium Floor Level). (1255mm x 900mm x 205mm Timber Stage Modules supported on 190mm x 70mm Timber Bearers on 1040mm height adjustable Screw Jacks)(Required Height 1170mm).	
Elliptical in shape:	
Orchestra Pit Floor level:	2.1m below Stage level
Width at Front:	5.2m
Width at Rear:	12.6m
Depth from front of Orchestra Pit to rear Wall under Stage:	4.2m
Timber Balustrade and Infill Panels around Auditorium edge of Orchestra Pit.	
Approximate Capacity:	35 musicians
Note: Orchestra Pit Cover is not Motorised. (Must be disassembled and reassembled manually).	

Stage Apron:

(Orchestra Pit Cover at Stage Level)

Orchestra Pit Cover at Stage Level: (1255mm x 900mm x 205mm Timber Stage Modules supported on 190mm x 70mm Timber Bearers on 1470mm height adjustable Screw Jacks)(Required Height 1990mm).	
Elliptical in shape.	
Floor level:	At Stage level
Width at Front:	5.2m
Width at Rear:	10.6m
Depth Front to Rear:	1.2m
Timber Balustrade and Infill Panels under Auditorium edge of Stage Apron.	
Note: Orchestra Pit Cover is not Motorised. (Must be disassembled and reassembled manually).	

Thrust Stage:

The Thrust Stage consists of a series of Timber Boxes of various sizes that are placed in the area in front of the Stage. (Plan can be provided on request)	
Note: Use of the Thrust Stage requires the Orchestra Pit Cover to be raised to Stage level. (See note about Stage Apron).	

Stage Drapes:

Midstage Tabs: (Traveller). (On a TC.75 heavy duty Steel Truss type Sliding Stage Track). (Standard Position - Line 39).	8.2m high × 14.4 wide. (1 x set of 2 Curtains).	Black
Upstage Tabs: (Smother). (Not on a Track). (Standard Position - Line 69).	8.2m high × 14.4 wide. (1 x set of 2 Curtains).	Black
Teaser: (Standard Position - Line 5).	3.5m high × 15m wide. (1 x Curtain, 0% Fullness with Tail Batten).	Black
Borders x 4: (Standard Positions - Lines 17, 30, 42 & 53).	3.5m high × 15m wide. (4 x Curtains, 50% Fullness).	Black
Tormentor: (Standard Position - Line 7).	8.5m high × 3.3m wide. (1 x set of 2 Curtains, 20% Fullness).	Black
Legs x 4: (Standard Positions - Lines 19, 32, 44 & 56).	8.5m high × 3.3m wide. (4 x sets of 2 Curtains, 50% Fullness).	Black
Cyclorama: (Standard Position - Line 71).	8.1m high × 15m wide. (1 x Curtain, 0% Fullness with Tail Batten).	White
House Curtain: (Fire Curtain). (Not on a Track). (Standard Position - Line 3).	8.2m high × 14.4 wide. (1 x set of 2 Curtains).	Red
Note: The House Curtain also acts as the Fire Curtain to provide separation between the Stage and the Auditorium in the event of a Fire onstage. (Drencher installed above).		
The path of this Curtain must not be obstructed.		
Please Refer to Appendix #2 for Standard Masking Layout		

Dressing Rooms:

Dressing Room	Capacity	Amenities
1	4 (Seated)	1 x Toilet / 1 x Shower
2	4 (Seated)	1 x Toilet / 1 x Shower
3	19 (Seated)	4 x Toilets / 3 x Showers
4	19 (Seated)	4 x Toilets / 3 x Showers

Green Room:

Note: There is currently no Green Room available at this Venue.

Wardrobe:

(Laundry / Work Room).

1 x Ironing Board.
1 x Iron.
1 x Top Loader Automatic Washing Machine.
2 x Front Loader Tumble Dryers.
4 x Mobile Wardrobe Racks.
4 x 1500mm x 900mm Worktables.
40 x Chairs.

Rehearsal Room:

12.6 metres x 7.8 metres with Sprung Timber Floor.
Two Walls are completely Mirrored.
Ballet Barres fitted to one wall.
Dedicated Toilet Facilities.
Located on the Upper Level of the Venue.

Note: Use of the Rehearsal Room is subject to availability. (Check availability).

Scene Dock Area

Scene Dock:

Loading Dock Entry Doors:	2.4m wide x 2.6m high Roller Door at Stage Level. (Allows end loading with direct access to the Stage from the Driveway).
Loading Platform:	Concrete Pad. 4m x 2.9m
Loading Platform Height:	1120mm above ground level

Rostra:

(Timber Frame).

Quantity	Height	Length	Width
6	300mm x	2400mm x	1200mm
6	600mm x	2400mm x	1200mm
6	900mm x	2400mm x	1200mm
(Each Module consists of a Foldable Timber Frame. 3 x Cross Members and a 16mm Plywood Top)			
2 x Sets of Treads. (For use with 600mm or 900mm Rostra).			
Note: The 300mm Rostra is subject to availability. (Check availability).			

Portable Staging:

(Aluminium Frame).

Quantity	Height	Length	Width
6 x Modules	Adjustable x	2400mm x	1200mm
(Each Module consists of a Foldable Aluminium Frame with a 16mm Plywood Top attached. 4 x Aluminium Struts. 1 x Aluminium Cross Brace).			
1 x Set of Treads.			

Machinery

Counterweight System:

Single Purchase Counterweight System:	36 Lines
Barrel-length:	15.0m
Barrel Diameter:	50mm
Number of Droppers Cables per Barrel:	5
Cradle Capacity:	350kg
Fly Rail Operation Position:	Opposite Prompt
House Curtain Operation:	Fly Only
Midstage Tabs Operation: (Traveller).	Fly or Slide
Upstage Tabs Operation: (Smother).	Fly Only
Please refer to Appendix #1 for Standard Hanging Plot.	
Note: Line 14 is occupied by the Cinema Projection Screen which cannot be moved. Line 15 runs very close to the back of the Projection Screen and will need to be Brailled if Flying Elements are to be attached to this Line.	
Note: There is a No Go Zone marked out on Fly Rail Side of Stage (OP), This area must be kept clear when Counterweights are being moved.	

Elevating work platform:

The Theatre is fitted with a GENIE GR20 Elevating Work Platform to assist in rigging and focussing Equipment above the Stage level.

(Persons wishing to use this Platform must produce their Operator Training Card as issued by the Elevating Work Platform Association of Australia as proof of training before commencing work on the Platform.)

Lighting Equipment

Lighting Positions:

5 x On Stage Lighting Bars

- LX1. (30 LX Sockets) (Sub Patch on PS Fly Gallery).
- LX2. (30 LX Sockets) (Sub Patch on PS and OP Fly Gallery).
- LX3. (30 LX Sockets) (Sub Patch on PS Fly Gallery).
- LX4. (30 LX Sockets) (Sub Patch on PS and OP Fly Gallery).
- LX5. (Cyc Light Bar) (10 Sockets) (Sub Patch on PS Fly Gallery).
- GPO's also available on Fly Gallery.

2 x FOH Lighting Bridges

- Bridge 1. (30 LX Sockets + 3 GPO).
- Bridge 2. (30 LX Sockets + 7 GPO).

6 x FOH Lighting Perches

- 3 x PS each with 3 hanging Rails. (Each has 4 LX Sockets + 1 GPO).
- 3 x OP each with 3 hanging Rails. (Each has 4 LX Sockets + 1 GPO).

6 x Stage Floor Traps

- 3 x PS. (Each has 4 LX Sockets + 1 GPO).
- 3 x OP. (Each has 4 LX Sockets + 1 GPO).

Stage Level Lighting Options

- 10 x Portable Lighting Boom Poles.
- 30 x Boom Arms.
- 18 x H Stands.

Please refer to [Appendix #4](#) and [Appendix #5](#) for Standard Rig Lighting Plans.

DMX Distribution:

Shielded Cat5e Cabling to numerous Locations throughout Venue.

Terminated in the Dimmer Room using 3 x 24 Port RJ45 Patch Bays.

Connected via 4 x LSC 10-way MDR Splitters.

4 x Universes available via ETC Response Mk2 DMX Gateway.

DMX Distribution Positions: (Physical DMX Output Lines).

- FOH LX Bridge 1. (5 Pin Female XLR) (Universes 1, 2, 3, and 4).
- FOH LX Bridge 2. (5 Pin Female XLR) (Universes 1, 2, 3, and 4).
- Stage Level DSP. (5 Pin Female XLR) (Universes 1, 2, 3, and 4).
- Stage Level DSOP. (5 Pin Female XLR) (Universes 1, 2, 3, and 4).
- PS Loading Gallery x 5. (5 Pin Female XLR) (Universes 1, 2, 3, and 4).
- PS Lighting Perch 3. (5 Pin Female XLR) (Universes 1 and 2).
-

DMX Input Positions: (Physical DMX Input Lines).

- Control Room. (5 Pin Male XLR) (Universes 1, 2, 3, and 4).
- Auditorium Mix Position. (5 Pin Male XLR) (Universes 1, 2, 3, and 4).
- Stage Level DSP. (5 Pin Male XLR) (Universes 1 and 2).
-

DMX Network Input Positions: (Via ETC Response Mk2 DMX Gateway).

- Control Room. (RJ45 Ethercon) (Universes 1, 2, 3, and 4).
- Auditorium Mix Position. (RJ45 Ethercon) (Universes 1, 2, 3, and 4).
- Stage Level DSP. (RJ45 Ethercon) (Universes 1, 2, 3, and 4).
-

DMX Network Device:

ETC Response Mk2 DMX Gateway.	
• IP Address:	10.101.100.103
• Subnet:	255.255.0.0
• IP Gateway:	10.101.1.1
• Input Socket:	1 x RJ45
• Output Sockets:	4 x 5 Pin Female XLR

Follow Spot Positions:

<ul style="list-style-type: none"> • Control Room. (Current location of Follow Spots). • Follow Spot Booth. (Located on FOH Bridge 2).
--

House Light Control Positions:

(House Lights are Controlled by a Set of 3 Bell Press Buttons).

(Up, Preset, Down).

<ul style="list-style-type: none"> • Control Room x 4. • Auditorium (Rear of Stalls). (Removable). • Auditorium (Entry 1 Lower Airlock - OP). • Auditorium (Entry 2 Lower Airlock - PS). • Stage Level (DSP). • Front of House Office. • There are 2 x portable Control Boxes that can be used at the Auditorium Mix Position or at Stage Level.

Dimmers:

<ul style="list-style-type: none"> • 48 x Strand Mini Pack 5Kw Dimmers (Channels 1 to 48). • 24 x Strand Mini Pack 2Kw Dimmers (Channels 49 to 72). • 12 x Strand Mini Pack 2Kw Dimmers (Channels 73 to 84).
Note: The 12 x Strand Mini Pack 2Kw Dimmer Rack (73 to 84) is subject to availability as it is used elsewhere in the Venue. (Check availability).

LX Patching:

<ul style="list-style-type: none"> • 200 LX Circuits located around venue terminating in the Dimmer Room. (Direct connection to Dimmers via 3pin Plug).
Please refer to Appendix #3 for LX Circuit locations.

Lighting Control Consoles:

1 x ETC Ion Lighting Control Console with Fader Wing.
1 x ETC Microvision FX Lighting Control Console. (125 Channels maximum).
1 x Jands ESPII 48 Lighting Control Console.

Lighting Fixtures:

• 12 x Martin Mac Aura XB LED moving Wash.
• 19 x ETC Source 4 Lustr2 LED 26° Profiles.
• 4 x ETC Source 4 Lustr2 LED 19° Profiles.
• 12 x ETC Colorsource LED CYC Fixture.
• 8 x Martin Mac Quantum LED moving Profiles.
• 20 x CCT Silhouette 15° 1000w Profiles
• 19 x CCT Silhouette 30° 1000w Profiles.
• 50 x CCT Starlette 1000w Fresnels.
• 6 x CCT 650w Minuette Profiles.
• 6 x CCT 650w Minuette Fresnels.
• 5 x CCT 500w Minuette Cyc Floods.
• 5 x CCT 1000w x 4 Iris 4 Cyc Floods.
Please refer to Appendix #4 and Appendix #5 for Standard Rig Lighting Plans.
Note: Not all of the Conventional Fixtures are currently in the Rig.

Follow Spots:

2 x Robert Juliat OZ LED Followspots.
(Currently located in Control Room. (Can be moved on request).

Lighting – Special Effect:

- 1 x 500mm Mirror Ball with Motor.
- 1 x Strobe Light. (Not DMX controlled).
- 2 x UV Fluorescent Lights. (Not DMX controlled).

Special Effect Equipment:

- 1 x Antari HZ-350 Haze Machine. (DMX controlled).
- 1 x Lightwave F100 Smoke Machine. (Not DMX controlled).

Sound Equipment

Analogue Sound Mixer:

- 1 x Soundcraft Series Two Mixing Console.
(24 Input Channels / Stereo Left and Right Out / Mono Out / 8 Aux Sends).

Digital Sound Mixer:

- 1 x Roland M-400 Digital Live Mixing Console.
(48 Input Channels / Stereo Left and Right Out / 6 Aux Sends).
Full specs: <http://www.roland.com/products/en/M-400/specs.html>

Digital Multicore:

- 1 x Roland S-4000 Digital Snake.
(32 Input Channels / 8 Sends).
Full specs: <http://www.roland.com/products/en/S-4000S-208/specs.html>

Sound Processor:

- 1 x DBX DriveRack PA2 Loudspeaker Management System.

Digital Audio Lines:

- Cat6 Cabling to numerous Locations throughout Venue.
 - 2 x Digital Audio Streams. (A and B).

Digital Audio Control Line Positions:

- DSP to Control Room x 2. (RJ45 Ethercon). (Stream A and B).
- DSOP to Control Room x 2. (RJ45 Ethercon). (Stream A and B).
- Control Room x 2. (RJ45 Ethercon). (Stream A, and B).
- Auditorium x 2 (Rear of Stalls). (RJ45 Ethercon). (Stream A and B).
-

Playback Equipment:

- 2 x Denon DN680 CD player. (Not CDRW compatible).
- 1 x Panasonic DVD Player.
- 1 x Denon BluRay Player.
- 1 x Denon Cassette Player.

Amplifiers:

(Main Amp Rack).

- 1 x Yamaha P-2200 Professional Series. (2 Channel Amplifier). (FOH).
- 1 x Crown XLS 602 (2 Channel Amplifier). (Subs).
- 2 x Yamaha P-2200 Professional Series. (2 Channel Amplifier). (F/Back).
- 2 x Yamaha P-2201 Professional Series. (2 Channel Amplifier). (F/Back).

Note: Amplifiers are located at Stage level DSOP.

Additional Amplifiers:

(Spare Amp Rack).

- 3 x Jell JMA-900 Power Amplifiers. (2 Channel Amplifier).

Speakers – FOH:

- 2 x Bose 802 Professional Loudspeaker. (3 Pin XLR) (Located behind Mesh Panels above lower Doors in Auditorium).
- 2 x Bose 802 Professional Loudspeaker. (3 Pin XLR) (Located behind Mesh Ceiling Panels in Auditorium Ceiling near Proscenium Arch).
- 2 x Bose 302 Sub Woofers. (3 Pin XLR) located on Front of Stage.

Speakers – Foldback:
(Wedges).

- 4 x Bose 620M Panaray Foldback Monitors. (Speakon Connectors).
- 2 x Bose 802 Professional Loudspeaker. (3 Pin XLR).
- 4 x Etone Wedges. (4 Pin XLR).
- 3 x Panasonic Ramsa WS-AT300E. (Speakon Connectors).

Special Effects Rack:

- 1x Yamaha Digital Delay D1500.
- 1 x Yamaha Digital Reverb R1000.
- 3 x Yamaha Q1027 Graphic Equalizer.

Microphones:

- 2 x Beyer Dynamic 700.
- 6 x Beyer Dynamic M88TG.
- 5 x AKG 330BT.
- 1 x Beyer Dynamic M380.
- 9 x Shure SM58 LCE.
- 4 x Shure Beta 58A.
- 6 x Shure KSM109 Condenser Microphones.
- 6 x Shure EZO/G Easyflex Overhead Microphones.
- 4 x Shure MX393/0 Boundary Microphones.
- 4 x Rode HS2-P Headset Microphones.
- 2 x PZM Plate Microphones.

Wireless Microphone System:

- 1 x Shure ULX-D Wireless Radio Microphone System.
(4 x SM58 Handheld Microphones / 4 x Belt packs with 4 x Rode Headset Mics).

Direct Inputs (DI's):

- 4 x BSS AR-133 Active DI's. (Phantom or Battery). (Pad: 0dB; 20dB; 40dB)
- 4 x Jands High quality passive DI's. Parallel inputs (TRS balanced)
(Output XLR 150 Ohms. Ground Lift).

Microphone Cables:

Various length Microphone Cables are available for use.

Microphone Stands:

- 20 x Microphone stands of various sizes with boom arms.
- 5 x Round Base Microphone Stands.

Multicores:

- 2 x Jands XLR 16 + 4 Stage Boxes. (30 metre).
- 1 x Jands XLR 12 Stage Box (12 metre). (Inputs Only).

Please Note:

Local Television Stations are on UHF frequencies 590mHz to 650mHz. Radio Microphones should be set on channels above these frequencies if possible.

Please Note:

This Venue is unable to provide Audio Consoles or associated PA, except for what is specified in the Audio Section of this Document.

Hirers will need to arrange their own Equipment if In-House PA and Console are not suitable for their Performance.

Backline Audio Equipment and Instruments will also need to be arranged by the Hirer as there is no Local Supplier in Port Pirie.

The closest providers of PA Equipment is in Adelaide.

Power Distribution

Power Distribution:

- 2 x 32amp 415volt 3 Phase Outlets at Stage Level. (Prompt Side).
- 2 x 63amp 415volt 3 Phase Outlets at Stage Level. (Prompt Side).
(A Splitter is available to convert 1 of these to 2 x 32amp Outlets).
- 1 x 32amp 415volt 3 Phase Outlet in Scene Dock.
- 2 x 32amp 415volt 3 Phase Outlets in Dimmer Room.
(These outlets Provide power to the Distro's for the Venue Intelligent Lighting Fixtures and will only be available if the Venue Intelligent Fixtures are not being used).
- 1 x 32amp 415volt 3 Phase Outlet in Ballroom.
- 1 x 32amp 415volt 3 Phase Outlet in Ballroom Kitchen.
(This Outlet Provides power to the Dishwasher in the Ballroom Kitchen and will only be available if the Dishwasher is not being used).
- 2 x 32amp 415volt 3 Phase Outlet in Ballroom Control Room.
(1 x of these outlets provides power to the Dimmers for Venue Ballroom Lighting and will only be available if the Venue Fixtures are not being used).
- 1 x 32amp 415volt 3 Phase Outlet in Control Room
- 1 x 40 metre 3 Phase Extension Lead

Note: All 3 Phase Outlets are RCD Protected

Projection Equipment

Data projector:

- 1 x Sony VPL - PX40 LCD Data Projector.
(3500 ANSI Lumens / Resolution 1024 x 768).
(Fitted with Long Throw Lens) (Mounted on Stand in Control Room).

Cinema Projection Equipment

Digital Cinema Projection Equipment:

- Christie CP2220 DLP Projector. (22000 Lumens).
- Doremi Showvault DCP-2K4 Cinema Server.
- Gefen AV Cinema Scaler Pro II. (Provides inputs for DVI / HDMI / Component / Composite / VGA (AV) devices).

(Can be configured for use on Cinema Screen or Cyclorama).

Note: This Equipment is available for Live Performances.

Note: Due to excessive Noise Levels, the Cinema Projection Equipment cannot be operated with the Control Room Windows open.

Lighting and Sound Consoles must be moved to the Auditorium Mix Position to use this Projector.

Please Note: This will affect Seating Capacity, refer to the Seating Capacity section of this Document for more information.

Miscellaneous Cinema Equipment

3D Cinema Scaler:

RealD 3D XL Mover. (For use on Cinema Screen only)

Cinema Sound:

Amplifiers

- 3 x QSC DCA-1644 Power Amplifier. (Left, Centre, Right)
- 1 x QSC DCA-2422 Power Amplifier. (Sub)
- 1 x QSC DCA-1824 Power Amplifier. (Side Surround)
- 1 x QSC DCA-1622 Power Amplifier. (Rear Surround)

Speakers

- 3 x QSC SC-2150 Two Way Digital Cinema Speaker. (L, C, R).
- 1 x QSC-SB Digital Cinema Dual 18" Subwoofer.
- 12 x QSC SR-46 Cinema Surround Speakers.

(This installation provides 5.1 or 7.1 Surround Sound).

Note: This Equipment is not available for Live Performances.

Other Miscellaneous Equipment

Pianos:

Feurich Leipzig Upright Piano. (Located in Orchestra Pit).

Wertheim Upright Piano. (For use Onstage and other areas).

KAWAI GS 50 6-foot Baby Grand Piano
(Available for Onstage Performances only).

Schiedmayer & Soehne 5-foot Baby Grand Piano. (Rehearsal Room use only)
(Currently situated on Landing outside Rehearsal Room).

Lectern:

1 x Lectern. (Black Frame with 2 Timber Shelves)

Stage Management Control System

Stage Managers Console is located stage left (Prompt Side) with Headset Talkback to the following Operator Positions:

- Control Room Lighting Position.
- Control Room Sound Position.
- Follow Spot Booth x 2.
- Auditorium Mix Position x 2.
- Fly Rail.

The Stage Managers Console is fitted with a Riedell Performer Series Digital Partyline CR-4 (4 Channel) Master Station, with a Beyer Dynamic DT-109 Headset.

The following additional Communication Devices are also available:

- 4 x Wired Performer C3 Digital Beltpack / Headset Stations.
- 4 x Wireless Performer C3 Digital Beltpack / Headset Stations.
- 8 x Beyer Dynamic DT-109 Headsets.

Stage Sound Relay and Cast Call Paging to all Cast and Production Areas is available.

An Audience Recall Warning Bell System to the Foyer and other public areas can be controlled from Stage Managers Position, Front of House Office, Control Room, or Candy Bar.

The Stage Managers Position also has the following additional Sockets available:

- Standard Power x 2. (/ 2 x 10amp GPO).
- DMX Input x 2. (5 Pin Male XLR). (Universes 1 and 2).
- DMX Output x 4. (5 Pin Female XLR). (Universes 1, 2, 3, and 4).
- DMX Output x 2. (5 Pin Female XLR). (Universes 1 and 2). (To transfer Control to Side Stage DMX Sockets).
- DMX Network Socket x 1. (RJ45 Ethercon). (Universes 1, 2, 3, and 4). (Provides access to DMX Gateway).
- Digital Audio x 2. (RJ45 Ethercon). (Streams A and B).
- Microphone Sockets x 4 – Female. (3 Pin Female XLR). (To OP side of Stage for Microphone Crossover).
- Speaker Sockets x 4 – Female. (4 Pin Female XLR). (To OP side of Stage for Speaker Crossover).
- Microphone Sockets x 10 – Female. (3 Pin Female XLR). (From Control Room Patch Panel). (Can be looped over to OP side of Stage via Control Room Patch Panel).
- Network Socket x 1. (RJ45). (To Control Room) (This can be used for any purpose that requires Network Access).
- House Light Control. (3 x Bell press Buttons).
- House Light Control Socket x 1 (4 Pin Male XLR) (For Portable House Light Controller).

Auditorium Mix Position

The Auditorium Mix Position is located at the Rear of the Stalls section of the Auditorium.

The following Sockets are available:

- Sound Power x 4 (**Red**). (4 x 10amp GPO). (On OP side of Mix Position for Sound purposes only).
- Standard Power x 4 (**White**). (4 x 10amp GPO). (On PS side of Mix Position for Lighting or any other purpose).
- Standard Power x 2 (**White**). (2 x 10amp GPO). (On OP side of Mix Position for any other purpose).

- DMX Input x 4. (5 Pin Male XLR). (Universes 1, 2, 3 and 4). (Linked through Control Room).
- DMX Network Socket x 1. (RJ45). (From Dimmer Room for access to DMX Gateway). (Universe 1, 2, 3 and 4).

- Digital Audio x 2. (RJ45 Ethercon). (Streams A and B). (Linked through Control Room).
- Analogue Audio x 1 – Male. (3 Pin Male XLR). (From Control Room).
- Analogue Audio x 1 – Female. (3 Pin Female XLR). (From Control Room).

- Network Socket x 1. (RJ45). (From Control Room) (This can be used for any purpose that requires Network Access).

- Sockets for Reidel Stage Comms x 2. (4 Pin Female XLR).

- House Light Control Socket x 1 (4 Pin Male XLR). (For Portable House Light Controller).

- F/Con. (To Technical Managers Office). (For sending Video to Ballroom or Rehearsal Room via SDI).

Standard Configuration

The Theatre is hired in a Standard Configuration for Lighting, Sound, Fly Lines and Masking. (See Plans below)

This includes:

- All Conventional Lighting Fixtures Rigged and Patched as per Plans below with standard 4 Colour Wash over the Stage. (Red (R26), Blue (R79), Amber (R21), OW).
- All Intelligent Lighting Fixtures Rigged, Patched and Addressed as per Plans below with 2 x DMX Lines patched to Control Room or Auditorium Mix Position.
- FOH Speakers x 4 (Permanently Rigged) and Subwoofers x 2 (Placed on Front of Stage) rigged and patched into Amplifiers with 2 x Data Lines patched to Control Room or Auditorium Mix Position.
- All Masking, Lighting Bars, etc, will be configured as per the Hanging Plot below.
- All Masking configured as per Plan below.
- The Stage Apron at Auditorium Floor level with Seats in.
- Stage Floor Colour – Black.
- Stage area clear, clean, and tidy.

Any variation to the Standard Configuration will be made at the Hirer's expense and returned to the Standard Configuration at the Hirer's expense.

The Theatre must be informed in writing at least two weeks prior to the bump in of any change you wish to make to the Standard Configuration.

Theatre Usage Guidelines

- Alterations to the structure and fittings of the Theatre are strictly prohibited including painting and drilling of holes into the Stage Floor. (Screwing Sets to the Stage Floor is permitted). No painting of Scenery or Equipment is permitted on Stage.
- Lighting and Sound Consoles are to be operated by Country Arts SA staff or by persons approved by the Venue Technical Manager by prior arrangement only.
- The Public Health Authority has set a maximum sound level limit of 105 decibels. Country Arts SA has the authority to enforce this ruling.
- The use of Pyrotechnics, Naked Flames, etc, will only be permitted with the appropriate South Australian Licences, and in the presence of a representative of the South Australian Metropolitan Fire Service which will be at the Hirer's expense.
- No Flammable Liquids or Explosive Material may be brought into the premises.
- The use of Smoke Machines, Hazers, Foggers, Etc) (other than dry ice), will only be permitted in the presence of a representative of the South Australian Metropolitan Fire Service or Trained Fire Warden which will be at the Hirer's expense.
- All rigging of Scenery, Lighting, etc. must comply with Workplace Health and Safety Regulations, and The Department of Industrial Relations Regulations. Country Arts SA may refuse the use of any Scenery, Lighting, Sound or other Equipment if it is deemed unsafe.
- The Counterweight Flying System is not to be used by persons under the age of eighteen years of age and only by persons approved by the Venue Technical Manager by prior arrangement.
- Smoking in the Theatre is strictly prohibited, other than on Stage as part of the performance by prior arrangement.
- No Alcohol shall be brought into the premises, other than by prior arrangement.
- No Foodstuffs or Liquids may be taken onto the stage, other than as part of the performance by prior arrangement.
- Corridors surrounding the Stage must be always kept totally clear of all Props and Scenery at all times. Any exceptions need to be approved by Technical Manager.
- All Performers and Backstage Crew are to enter the Theatre via the Stage Door. Access is not permitted via the Theatre Foyer.
- No persons, other than members of the Production Crew will be permitted in the Auditorium and Foyer areas during rehearsals.
- The Theatre is fitted with GENIE GR20 Elevating Work Platform to assist in rigging and focussing equipment above the stage. The Platform will elevate to 5.95 metres above stage level (Approximately 8 metres maximum working height).
- People wishing to use this EWP must produce their yellow Operator Training card as issued by the Elevating Work Platform Association of Australia as proof of training, before commencing work on these platforms.

Please Note:

Local Television Stations are on UHF frequencies 590MHz to 650MHz. Radio Microphones should be set on channels above these frequencies if possible.

Please Note:

This Venue is unable to provide Audio Consoles or associated PA, except for what is specified in the Audio Section of this Document.

Hirers will need to arrange their own Equipment if In-House PA and Console are not suitable for their Performance.

Backline Audio Equipment and Instruments will also need to be arranged by the Hirer as there is no Local Supplier in Port Pirie.

The closest provider of PA Equipment is in Adelaide.

For further Technical information or advice please contact the Theatre Technical Manager on 0427 007 252 or the Theatre Box Office (08) 8633 8500 during Business Hours. (Please refer to our Website for Hours of Operation. www.countryarts.org.au/venues/northern-festival-centre).

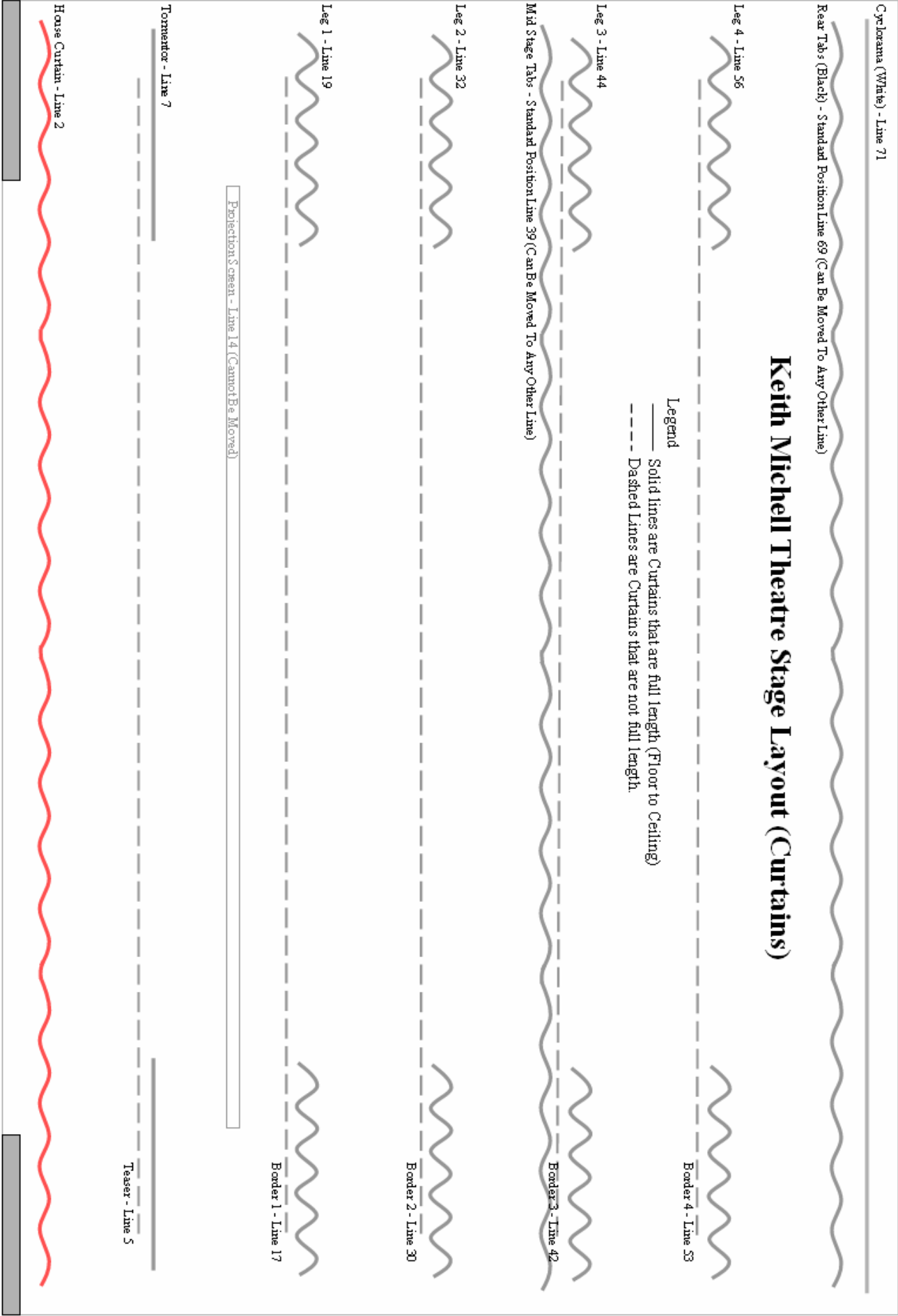
Attached Appendix List

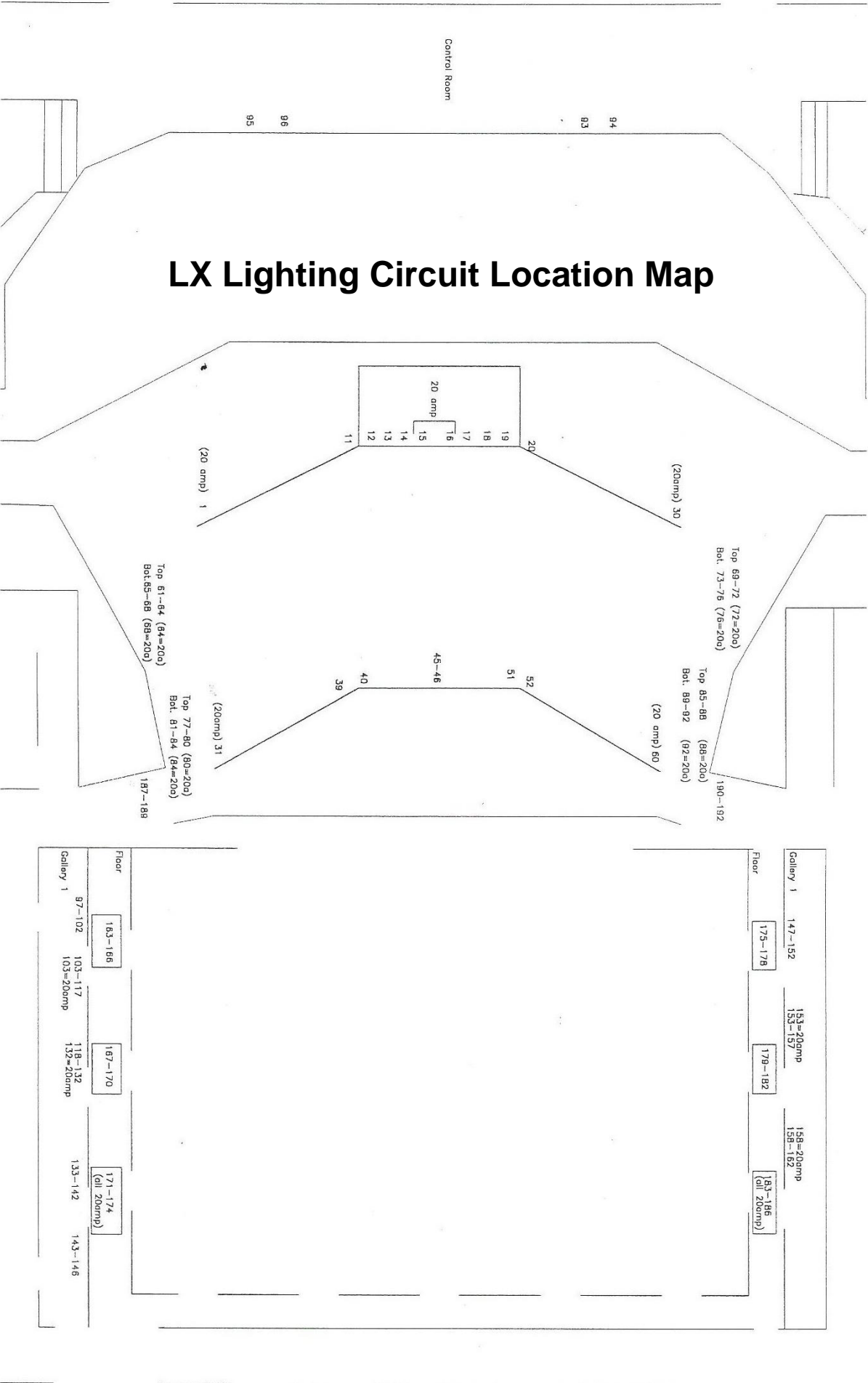
The following Documents are attached at the end of this Document.

- Appendix #1 – Standard Hanging Plot.
- Appendix #2 – Stage Masking Layout.
- Appendix #3 – LX Lighting Circuit Layout.
- Appendix #4 – Standard Lighting Rig – Stage.
- Appendix #5 – Standard Lighting Rig – FOH.
- Appendix #6 – Venue Plans.
- Appendix #7 – Venue Line Drawings.
- Appendix #8 – Venue Seating Plan.
- Appendix #9 – Direction Maps.

KEITH MICHELL THEATRE - STANDARD HANGING PLOT

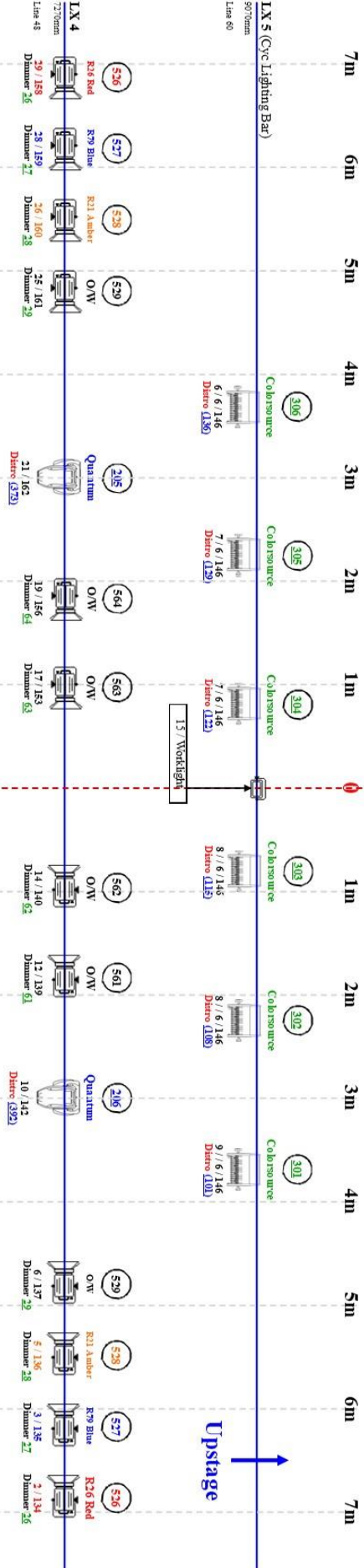
LINE NO.	DESCRIPTION	DISTANCE FROM INSIDE PROSCENIUM WALL (Stage Edge)	WEIGHTS FOR STANDARD RIG
1	SPARE	220 mm (1020mm)	2 x 15kg
3	HOUSE TABS (House Curtain)	520 mm (1320mm)	2 x 15kg + 8 x 15kg
5	TEASER	820 mm (1620mm)	2 x 15kg + 3 x 15kg
7	TORMENTOR	1120 mm (1920mm)	2 x 15kg + 3 x 15kg
8	SPARE	1270 mm (2070mm)	2 x 15kg
10	LX 1 (12 x Fresnel / 4 x 30° Profile / 4 x Mac Aura XB)	1570 mm (2370mm)	8 x 15kg + 5 x 15kg
12	SPARE	1870 mm (2670mm)	2 x 15kg
14	PROJECTION SCREEN (Not Movable to Any Other Line)	2170 mm (2970mm)	2 x 15kg + 17 x 15kg
15	SPARE	2320 mm (3120mm)	2 x 15kg
17	BORDER 1	2620 mm (3420mm)	2 x 15kg + 3 x 15kg
19	LEG 1	2920 mm (3720mm)	2 x 15kg + 3.5 x 15kg
22	LX 2 (12 x Fresnel / 2 x 30° Profile / 4 x Mac Aura XB / 2 x Mac Quantum)	3370 mm (4170mm)	8 x 15kg + 8 x 15kg
24	SPARE	3670 mm (4470mm)	2 x 15kg
25	SPARE	3820 mm (4620mm)	2 x 15kg
28	SPARE	4270 mm (5070mm)	2 x 15kg
30	BORDER II	4570 mm (5370mm)	2 x 15kg + 3 x 15kg
32	LEG II	4870 mm (5670mm)	2 x 15kg + 3.5 x 15kg
34	SPARE	5170 mm (5970mm)	2 x 15kg
35	LX 3 (14 x Fresnel / 4 x Mac Aura XB)	5320 mm (6120mm)	8 x 15kg + 7.5 x 15kg
37	SPARE	5620 mm (6420mm)	2 x 15kg
39	SPARE (Standard Position for Tabs 1)	5920 mm (6720mm)	2 x 15kg
42	BORDER III	6370 mm (7170mm)	2 x 15kg + 3 x 15kg
44	LEG III	6670 mm (7470mm)	2 x 15kg + 3.5 x 15kg
47	SPARE	7120 mm (7920mm)	2 x 15kg
48	LX 4 (14 x Fresnel / 2 x Mac Quantum)	7270 mm (8070mm)	8 x 15kg + 7.5 x 15kg
52	SPARE	7870 mm (8670mm)	2 x 15kg
53	BORDER 4	8020 mm (8820mm)	2 x 15kg + 3 x 15kg
54	SPARE	8170 mm (8970mm)	2 x 15kg
56	LEG IV	8470 mm (9270mm)	2 x 15kg + 3.5 x 15kg
57	SPARE	8620 mm (9420mm)	2 x 15kg
60	LX 5 (CYC Light Bar) (6 x ETC Colorsource Cyclorama)	9070 mm (9870mm)	8 x 15kg + 10 x 15kg
63	SPARE	9520 mm (10320mm)	2 x 15kg
65	SPARE	9820 mm (10620mm)	2 x 15kg
67	SPARE	10120 mm (10920mm)	2 x 15kg
69	SPARE (Standard Position for Tabs 2)	10420 mm (11220mm)	2 x 15kg + 11 x 15kg
71	CYCLORAMA	10720 mm (11520mm)	2 x 15kg + 3 x 15kg
	TABS 1 (Movable - Standard Position – Line 39)		2 x 15kg + 11 x 15kg
	TABS 2 (Movable - Standard Position – Line 69)		2 x 15kg + 11 x 15kg
Stage edge to inside Proscenium Arch 800mm		Tormentor opening 11m (adjustable)	
Projection Screen stage clearance 10800mm		Cyclorama and Tabs are movable to any spare bar	
Proscenium Width: 12 m / Proscenium Height: 7.5m			
LX Bar Only (7 x 15kg Weights) / LX Bar + Loom (8 x 15kg Weights) / Barrel Only (2 x 15kg Weights)			
The weights marked in Red counterbalance the weight of the empty bar and should not be removed. They need to be allowed for when calculating total Bar Weight.			
Counterweights:	Large: 30 kg (Must only be loaded at Stage Level, no exception).		Medium: 15 kg
			Small: 7.5 kg





Northern Festival Centre - Port Pirie (Incorporating Keith Michell Theatre) Standard Lighting Rig (Stage)

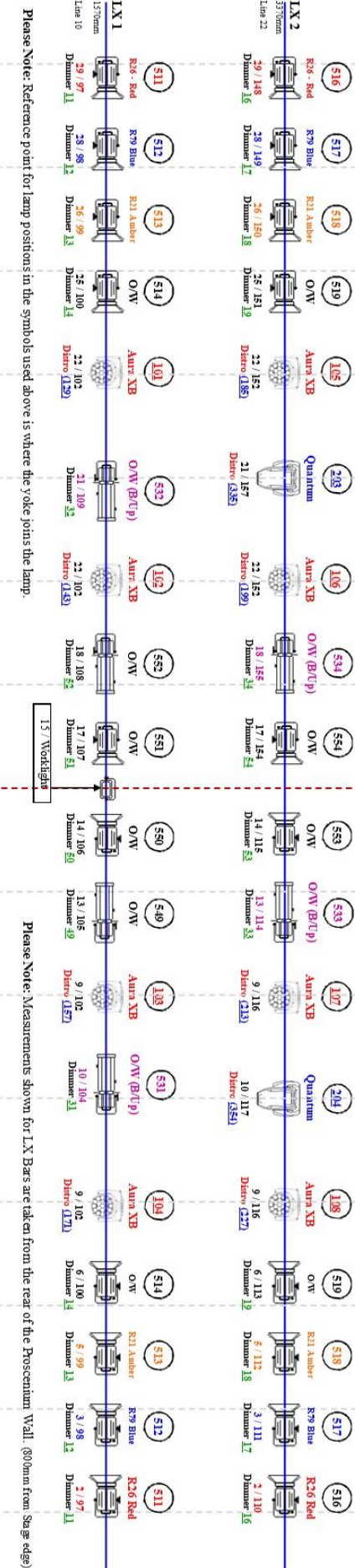
KEY	Fixture	Colour	Bar / Circuit	CCT Frame	CCT S103	Mac Aura XB	Mac Quantum Profile	ETC Coloursource	LED Worklight
	Bar / Circuit	Colour	Bar / Circuit	CCT Frame	CCT S103	Mac Aura XB	Mac Quantum Profile	ETC Coloursource	LED Worklight
	Bar / Circuit	Colour	Bar / Circuit	CCT Frame	CCT S103	Mac Aura XB	Mac Quantum Profile	ETC Coloursource	LED Worklight



Please Note: These Plans have been drawn from the perspective of the Lighting Operator at FOH.

Please Note: All Moving Fixtures are Patched OP to Prompt...

Please Note: All Conventional and Static Intelligent Fixtures are Patched Prompt to OP...



Please Note: Reference point for lamp positions in the symbols used above is where the yoke joins the lamp.

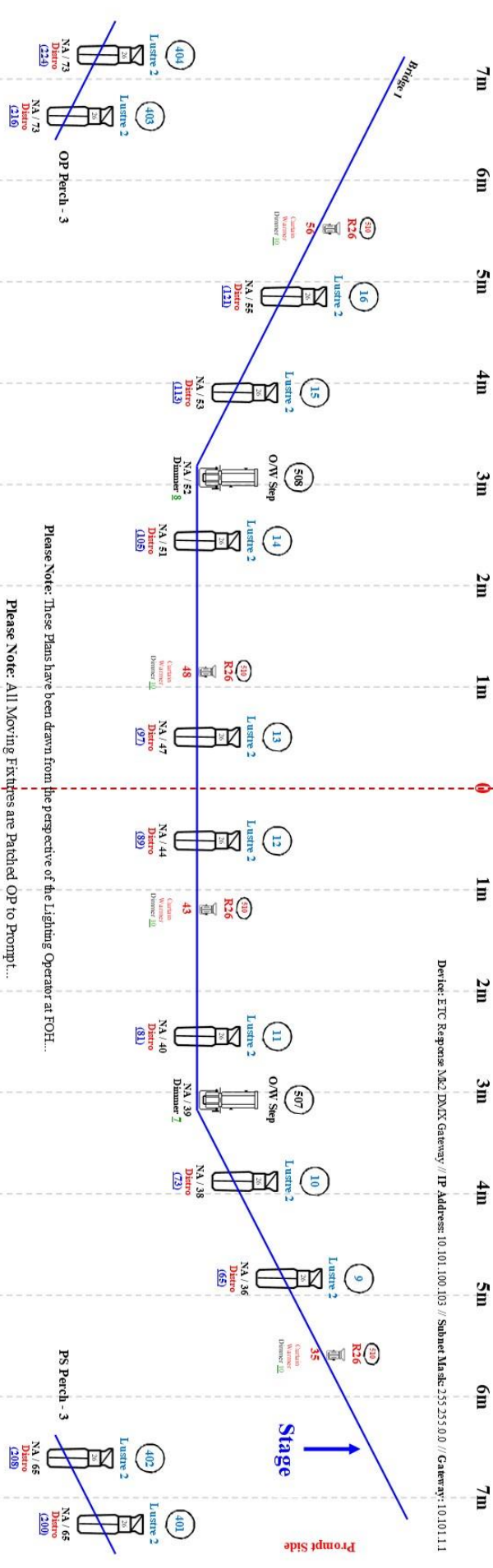
Please Note: Measurements shown for LX Bars are taken from the rear of the Proscenium Wall. (800mm from Stage edge)

Northern Festival Centre - Port Pirie
(Incorporating Keith Michell Theatre)
Standard Lighting Rig (FOH)

KEY	
	Fixture
	Colour
	Bar # Circuit # Bar # Circuit # Dimmer #
	CCT 3000
	CCT 3000
	CCT 3000
	ETC Luster 2 (197)
	ETC Luster 2 (197)
	Mac Quantum Profile
	Viper HMIgen Worklight



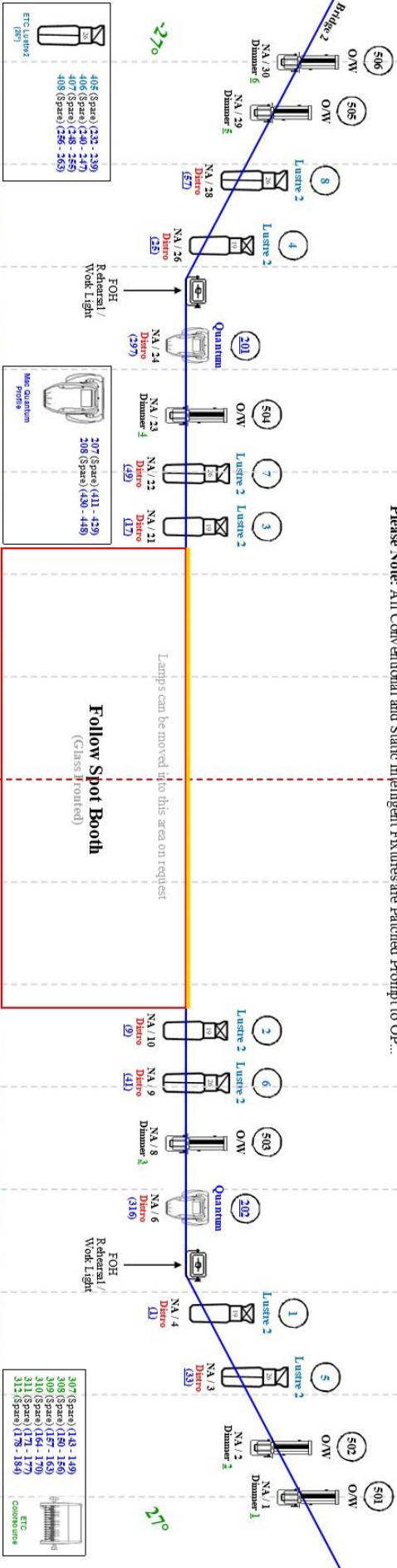
Device: ETC Response NA2 DMX Gateway // IP Address: 10.101.100.103 // Subnet Mask: 255.255.0.0 // Gateway: 10.101.1.1



Please Note: These Plans have been drawn from the perspective of the Lighting Operator at FOH...

Please Note: All Moving Fixtures are Patched OP to Prompt...

Please Note: All Conventional and Static Intelligent Fixtures are Patched Prompt to OP...

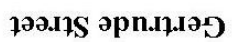


Please Note: All Dimmers 4 x PS Perch-3 ETC Luster 2's 4 x Spare ETC Luster 2's and All ETC Coloursource are on Universe 1...

Please Note: Reference point for lamp positions in the symbols used above is where the yoke joins the lamp...

Please Note: All MAC Aura's, All MAC Quantum and 16 x FOH ETC Luster 2's are on Universe 2...

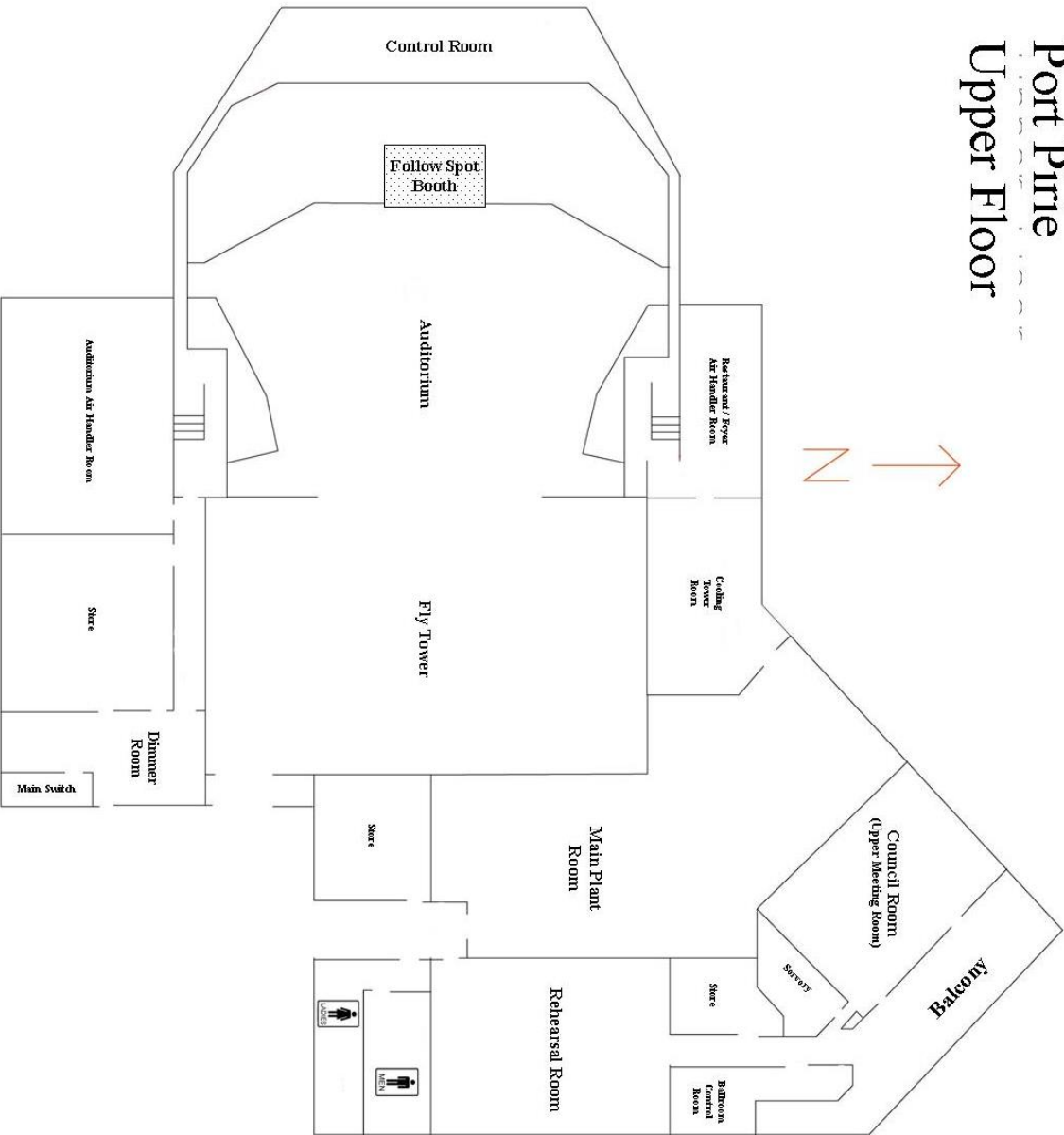
Please Note: FOH Bridge Angle 27 Degrees...

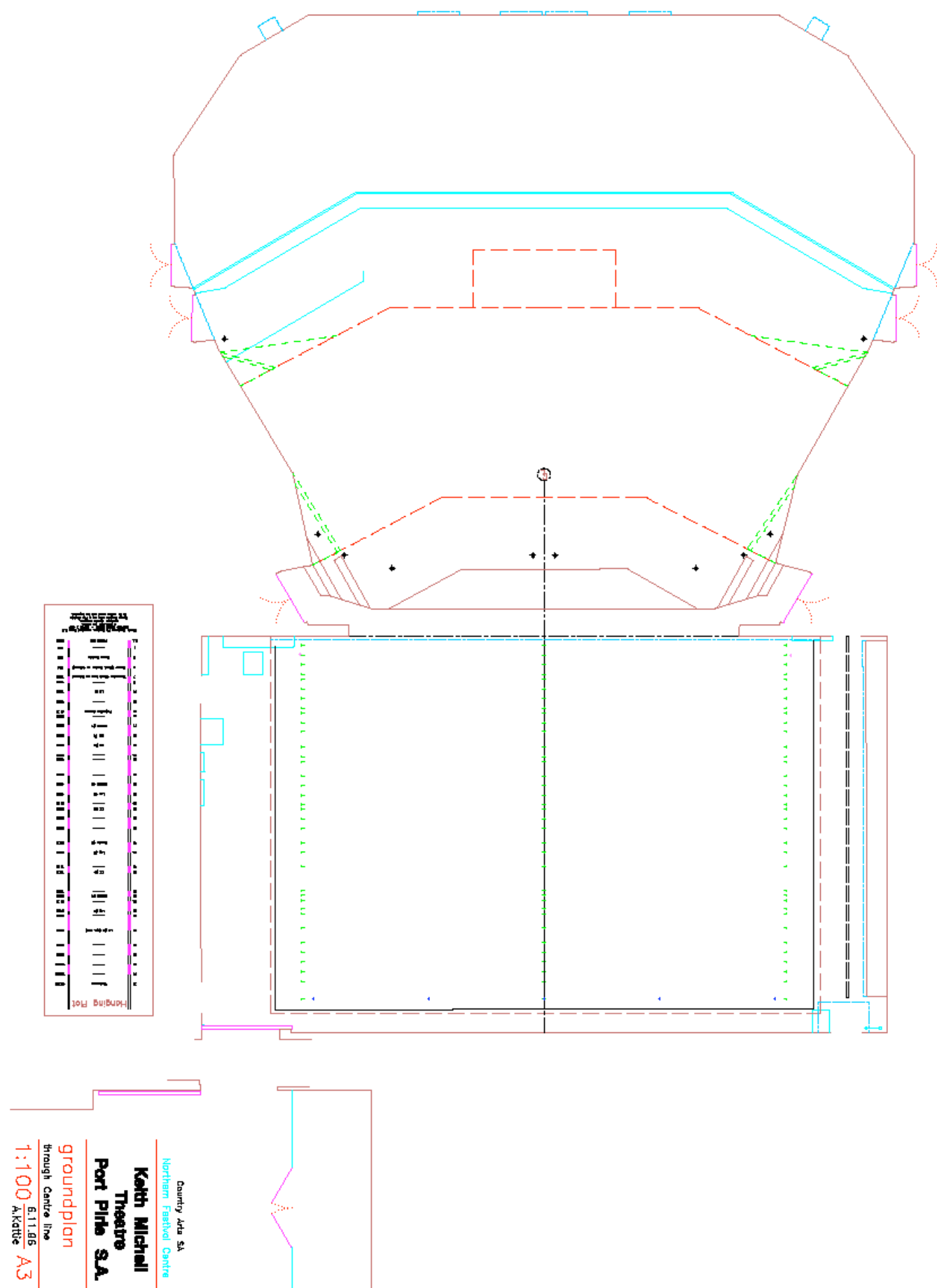
$$Z \rightarrow$$


Northern Festival Centre

Port Pirie

Upper Floor









Images taken from Google Maps

