

Middleback Arts Centre – Whyalla

TECHNICAL FACILITIES



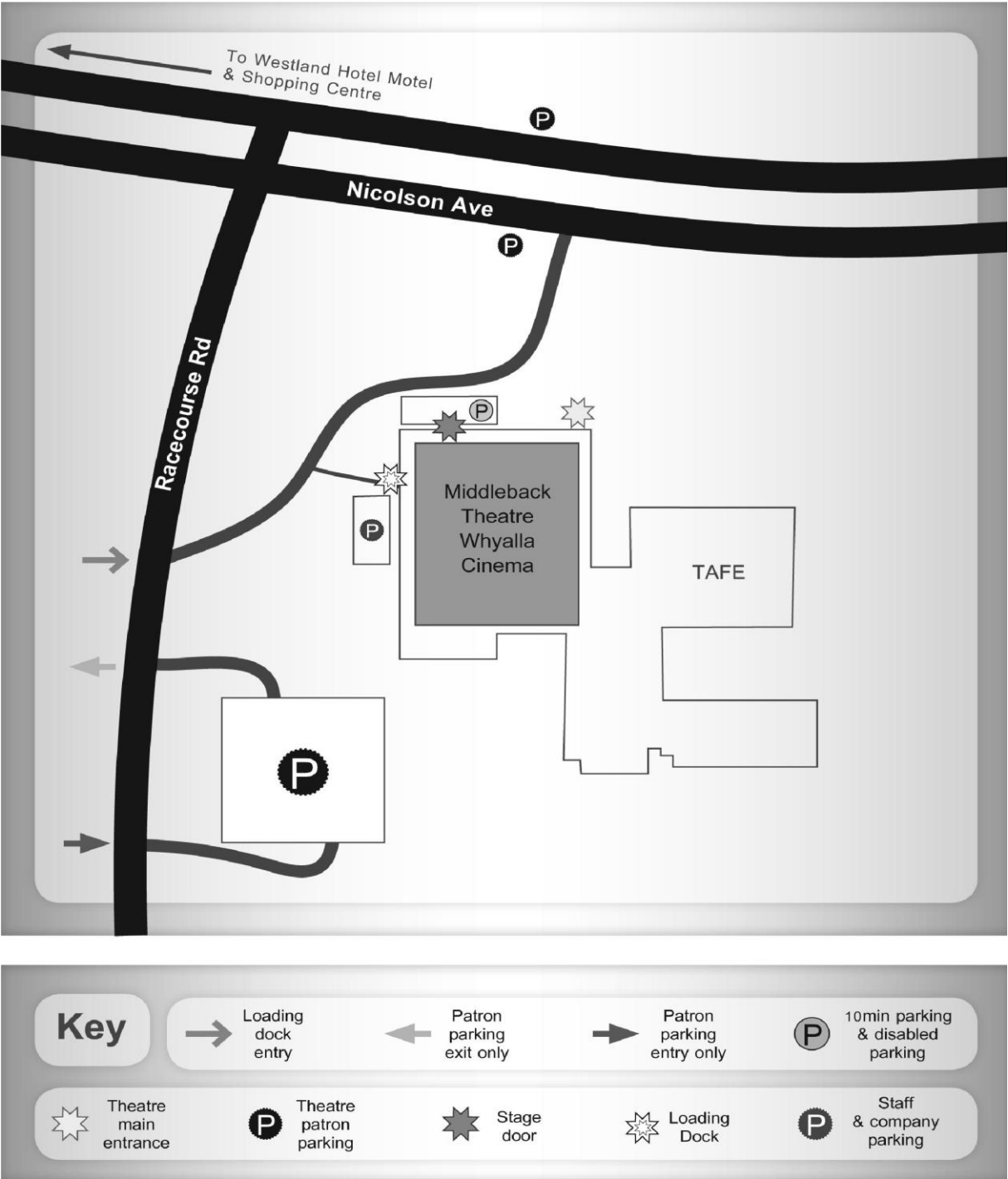
141a Nicolson Avenue, PO Box 640 Whyalla, SA 5600

Box Office: (08) 8644 7300, Fax: (08) 8644 7399

Email: middleback@countryarts.org.au / Web: www.countryarts.org.au

Arts Centre Manager: Ryan Sutherland, ryan.sutherland@countryarts.org.au

Head Theatre Technician: Paul Travers, paul.travers@countryarts.org.au



Seats

TOTAL SEATING – Maximum Capacity does not take into account Accessible Seating Area. Accessible seating area setup Maximum seating **470** (see seating map attached)

Total possible seating with thrust stage or orchestra pit in use - minus 17 seats

Total possible seating with sound desk placed in auditorium – minus 16 seats

The theatre can cater for up to 6 wheelchair seats

Country Arts SA reserves the right to withdraw from sale for any performance, a maximum of 8 seats.

Therefore above capacities may reduce by 8.

Scene Dock Area

Dock doors allows end loading with direct access for transport from side street Hydraulic lift at road level for lifting and lowering of equipment.	2.65m high x 2.17m wide
--	-------------------------

Stage Drapes

2 sets black travellers	
4 pair blacklegs	8m high x 3.3m wide
4 borders	3.5m high x 15.6m wide
1 cyclorama white	7.7m high x 15.6m wide

Green Room

Approximately 8.5m x 6.5m Carpeted. Available for rehearsal space and resting area.
--

Wardrobe (Work Room)

1 Fixed wall ironing board
1 portable ironing board
1 iron
1 automatic front loading machine
1 front load tumble drier
1 upright drier
4 large portable wardrobe racks
2 small portable wardrobe racks

Dressing Rooms

Number	Capacity	Amenities
1	20	Shower and toilet
2	20	Shower and toilet
3	4	Shower and toilet
4	4	Shower and toilet

Lectern

One

Music Stands

13 x music stands with scone light
1 Conductor's music stand with scone lights

Pianos

1 Yamaha C7 Grand Piano
1 Yamaha Upright

Rostra

7 each of 6' x 4' (1830 x 1220) in heights	
6"	(152mm)
1'	(304mm)
1'6"	(456mm)
2'	(608mm)
2'6"	(762mm)
3'	(914mm)

Steps: 2 x 3' (914mm) high
4 x 2' (608mm) high
2 x 1' (304mm) high
Step available from stage/auditorium located in centre of stage only 1000mm high x 1200 wide

Machinery

45 Single Purchase 5 Line Counter Weight Sets	
Manual Operation – Stage Level Prompt Side	
Barrel Length	15.6m
Pipe Outside Diameter	48mm
House Curtain	Fly Manual
French Action	Motor Driven
Black Stage Tabs (x2)	Manual Close and Draw

Elevated Work Platform

The theatre is fitted with a JLG model 20MVL elevated work platform to assist in rigging and focussing equipment above stage. The platform will elevate to 5.94 meters above stage level. Persons wishing to use this platform must produce their yellow Operator Training card as issued by the Elevating Work Platform Association of Australia as proof of training, before commencing work on the platform.

Lighting Equipment

Lighting Control System

ETC ION lighting desk with multiple chase/cue sequences
 96 control channels
 192 circuits patch panel
 24 x 5-KVA LSC TEKO Dimmers
 72 x 2.5-KVA LSC TEKO Dimmers

DMX Distribution All Cat5 via 4 x LSC 10-way splitters and RJ45 patch bay

4 streams (A,B,C,D) with 5 pin XLR outlet positions
 PS LX Bridge 1. PS LX Bridge 2
 PS DS (SM Position) OP DS
 PS Stage Gallery 4 outlets OP Stage Gallery 1 outlet (for LX bars)
 DMX Inputs: Control Room & SM Position

Lighting Positions

5 x On-Stage lighting bars
 4 x LX Bars
 1 x Cyc LX units
 2 x FOH Lighting Bridges
 8 x Portable side booms

Spot & Floodlight Lanterns

2 x	Robert Juliat "OZ" 600w Led Follow Spots
8 x	Martin Mac Quantum Profiles
12 x	Martin Mac Aura XB's
24 x	ETC Source Four Profiles
14 x	ETC Colour Source Cyc (7 – Cyc 7 – Grown Row)
20 x	CCT 1kw Starlette Fresnels
20 x	CCT 650w Minuette Zoom Profiles

Power

1 x	32A – 3 Phase outlet prompt upstage corner
1 x	32A – 3 Phase outlet OP upstage corner
1 x	32A – 3 Phase outlet in dimmer room
12 x	16A – Outlets in dimmer room that can be patched to any lighting bar

Sound Equipment

Desks (Digital)

1 Roland RSS M-400 48 channel sound mixer
48 mic/line input with phantom power, stereo programme out left, right and centre, + 4 auxiliary sends
Full specs: <http://www.roland.com/products.en.M-400/specs.html>

Desk (Analogue)

Soundcraft GB4

Stage Box

Roland S-4000 Digital Snake
32 Inputs / 8 Outputs Modular
Full Specs: <http://www.roland.com/products/en/S-4000S-3208/specs.html>

Amplifiers

1 x	Crown XL 602 Amplifier for FOH driven from dbx drive rack EQ
1 x	Yamaha P2002M Amplifier for Subwoofers
1 x	Crown LXi 1500 for Foldback Speaker
2 x	Jeil JMA-900 Amplifiers for Foldback Speakers

Foldback Speakers

4 x	Electro-Voice TL 12/2 Foldback Speakers
3 x	Ramsa WS – AT300

Speakers FOH

4 x	JBL AC2215/64 & AC2215/95 (1 of each fitted per side of proscenium)
2 x	Bose 502 Subwoofers

Play/Rec Equipment

2 x	Denon DNC 680 professional CD players
-----	---------------------------------------

Talk back system

4 x	Riedel Wired belt packs
4 x	Riedel Wireless belt packs

Microphones

6 x	AKG D330 microphones
4 x	Electro-Voice RE45N/D Shotgun microphones
4 x	Shure Beta 58A microphones
6 x	Shure SM58 microphones
6 x	Shure KSM109 Cardioid condenser instrument microphone
4 x	Shure MX393/0 Omnidirectional condenser boundary microphones
6 x	Shure EZO/G Easyflex overhead microphones
4 x	Shure SM58 Hand held radio Microphones
1 x	Shure ULX-D 4 Channel digital wireless microphone system
4 x	Rode HS1-P headsets

DI Boxes

4 x	BSS AR – 133 Active DI Boxes
2 x	Jands Di Boxes

Stands

20x	Microphone stands various sizes with boom arms
-----	--

Projection Equipment

Cinema Projection Equipment

Christie CP2200 DLP Projectors – Has Gefin Scaler attached will take DVI/HDMI Component & Composite (AV) inputs Is Configured for Cinema Screen or Cyc use

3D System

RealD only on Cinema Screen

Sound

Installed QSC 5.1 or 7.1 Surround Sound

Audio Visual

1 Overhead Projector
1 x Cinema Screen Fixed at line number 11 clearance when flown 8200mm
1 x Rear Projection Screen at line number 23 clearance flown 7300mm plus extra 2100mm for soft bottom masking
1 x Mitsubishi data projector FL7000U* NOT REMOVABLE FROM CONTROL ROOM
Rextron VGA / CAT5 Extender from stage to control room

Stage Management System

Console mounted stage left (prompt side) with head control set talk back from outstations.

Stage sound relay and cast call system.

Audio talk back cueing systems to all production outstations.

Plug in headsets available in the control room.

Wireless headsets for lighting bridges, fly gallery and backstage.

Cast call and stage sound relay to all dressing rooms and cast assembly areas.

Warning bell system to foyer and public areas controlled by front of house manager.

Middleback Arts Centre Hanging Plot

Line	Distance from Setting Line	Description	New Allocation
0	450	House Curtain	Cannot be moved to another line
1	750	False Proscenium Teaser	Cannot be moved to another line
2	900	False Proscenium Tormentor	Cannot be moved to another line
3	1050	Spare	
4	1200	Line not fitted	
5	1350	LX 1	
6	1500	Line not fitted	
7	1650	Spare	
8	1800	Spare	
9	1950	Spare	
10	2100	No 1 Border	
11	2250	Cinema Screen (fixed)	Cannot be moved to another line
12	2400	No 1 Legs	
13	2550	Spare	
14	2700	Line not fitted	
15	2850	LX 2	
16	3000	Line not fitted	
17	3150	Spare	
18	3300	Spare	
19	3450	Spare	
20	3600	Spare	
		150mm gap	
21	3950	Line not fitted	
22	4050	No 2 Border	
23	4200	Rear Projection Screen	Cannot be moved to another line
24	4350	No 2 Legs	
25	4500	Line not fitted	
26	4650	LX 3	
27	4800	Line not fitted	
28	4950	Spare	
29	5100	Spare	
30	5250	Spare	
31	5400	Spare	
32	5550	Line not fitted	
33	5700	Spare	
34	5850	Spare	
35	6000	No 1 Tabs	
36	6150	Spare	
37	6300	No 3 Border	
38	6450	Line not fitted	
39	6600	No 3 Legs	
40	6750	Spare	
41	6900	Line not fitted	
42	7050	LX 4	
43	7200	Line not fitted	
44	7350	Spare	
45	7500	Spare	
		150mm gap	
46	7800	Line not fitted	
47	7950	Spare	
48	8100	No 4 Border	
49	8250	No 4 Legs	
50	8400	Line not fitted	
51	8550	Line not fitted	
52	8700	Cyc Flood Bar (Iris 4)	
53	8850	Line not fitted	
54	9000	Line not fitted	
55	9150	Spare	
56	9300	No 2 Tabs	
57	9450	Spare	
58	9600	Spare	
59	9750	PS Side Barrel	
60	9900	OP Side Barrel	
61	10050	Cyclorama	

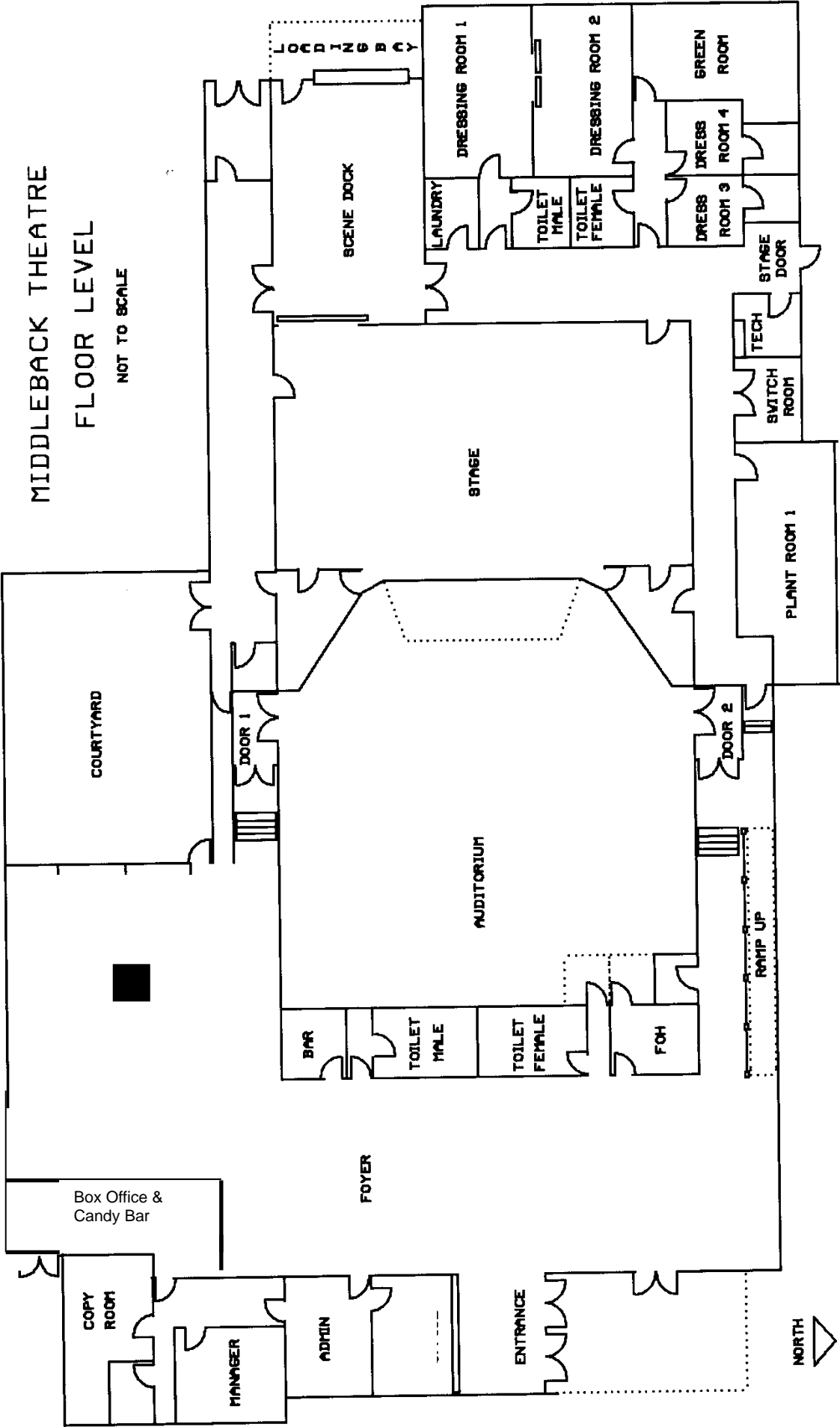
Standard Rig

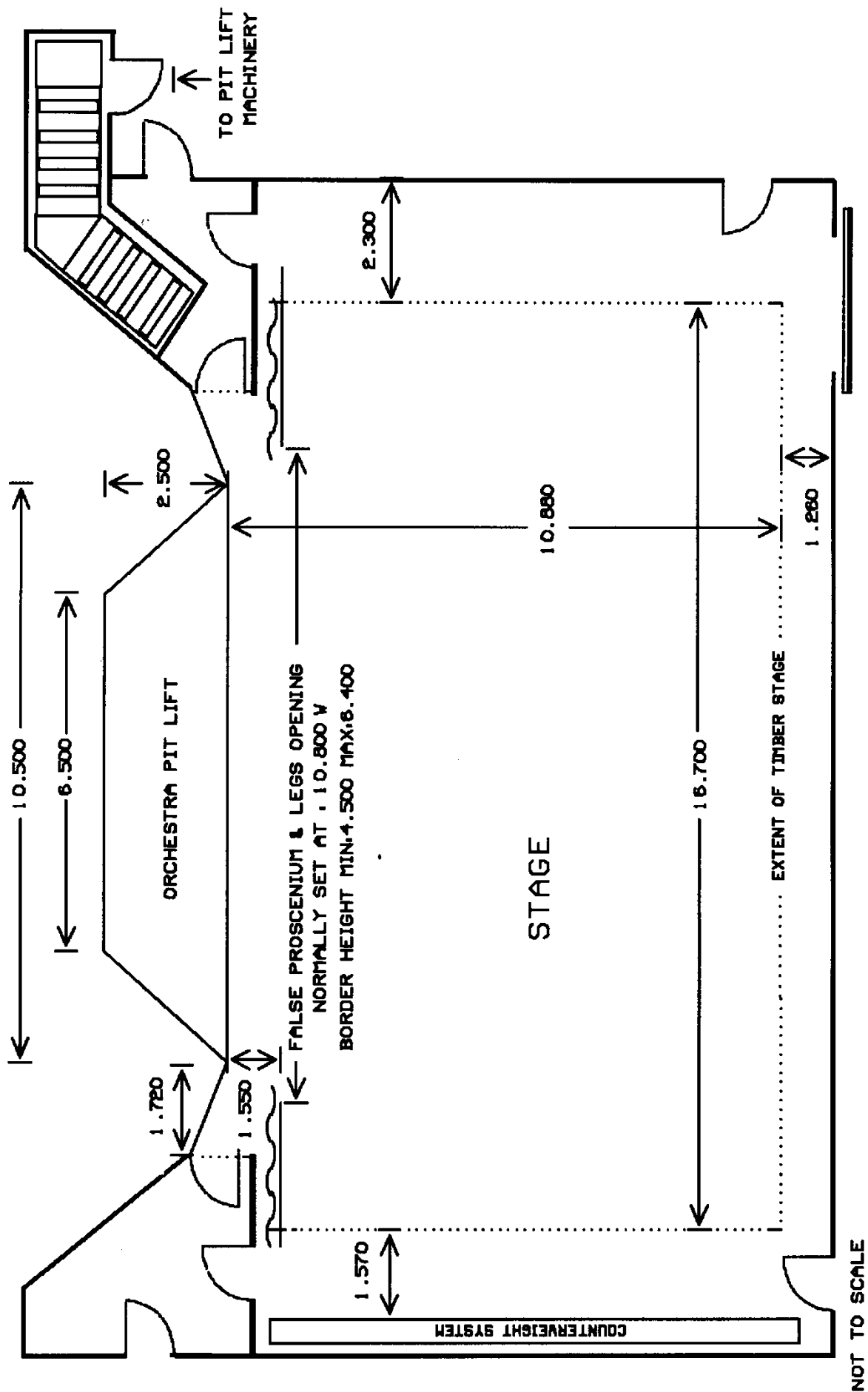
The theatre is hired in a standard configuration for lighting, sound and fly lines. The stage apron at auditorium floor level with seats in; stage floor colour - theatre black; stage clean clear and tidy. Any variation to the standard configuration will be made at the hirer's expense and returned to the standard configuration at the hirers expense. The theatre must be informed in writing at least four weeks prior to the bump in of any change you wish to make to the standard rig.

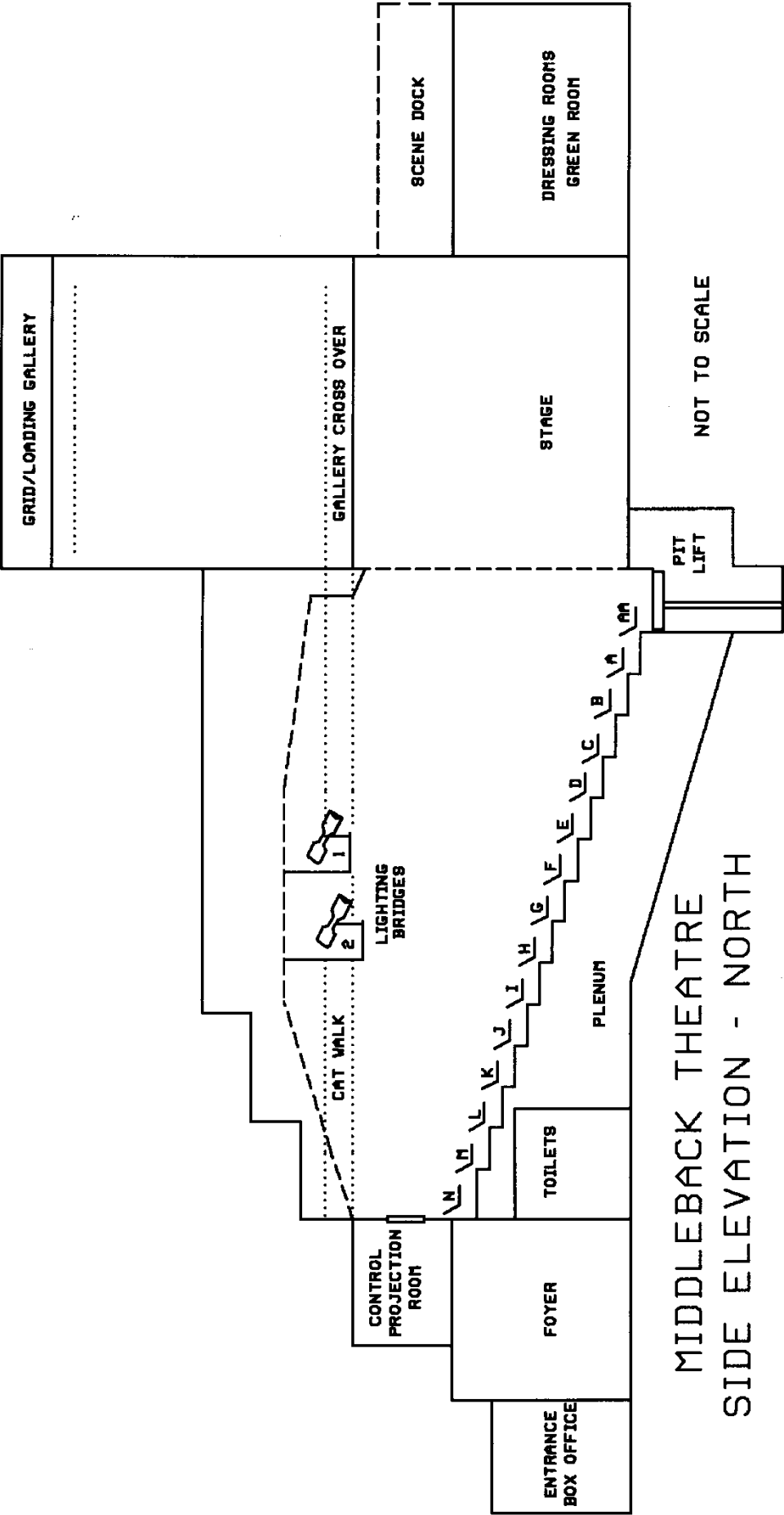
Theatre Usage Guidelines

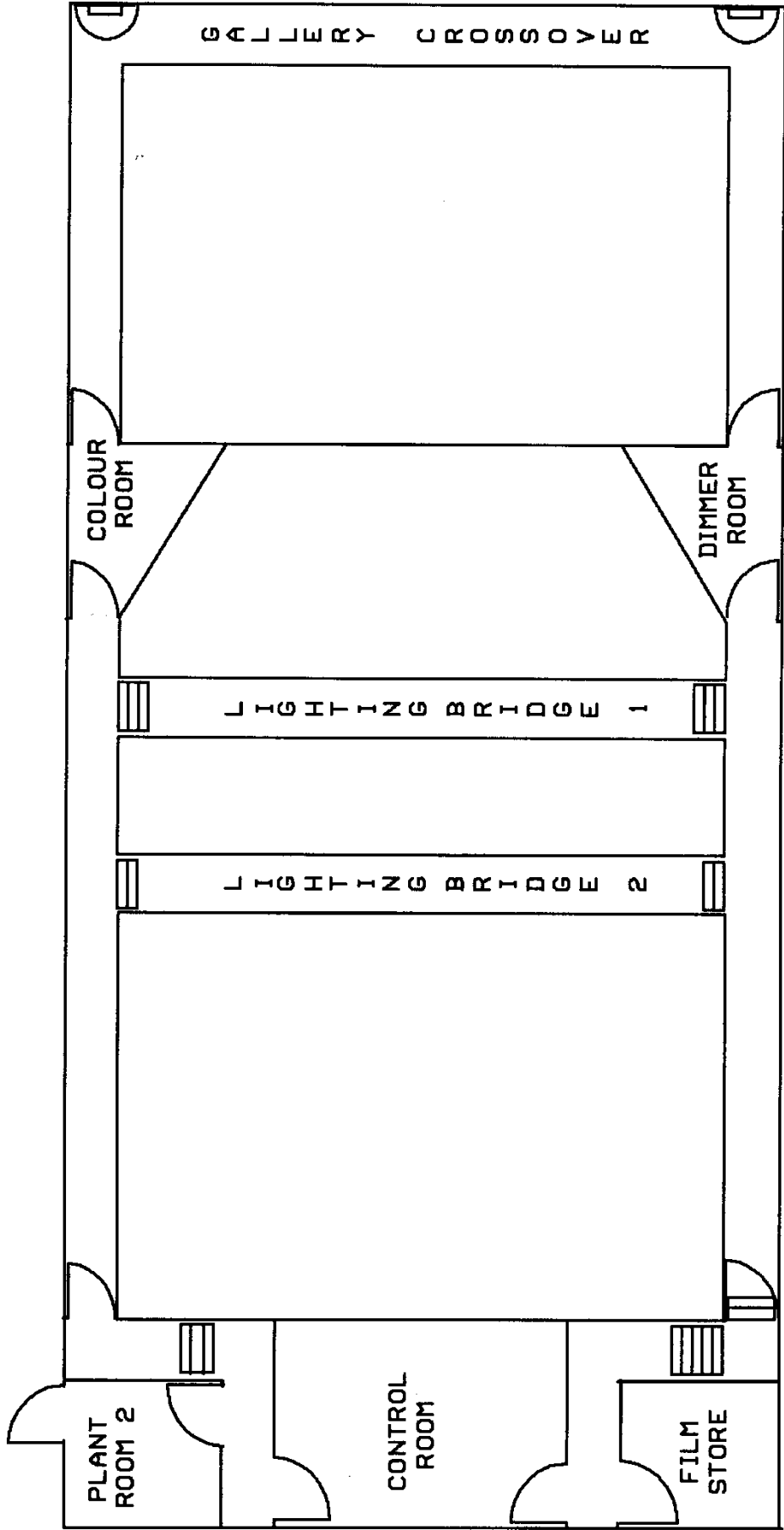
- Alterations to the structure and fittings of the theatre are prohibited (including painting and drilling of holes into the stage floor). No painting of scenery or equipment is permitted on stage. Glitter may not be used on scenery or costumes.
- Lighting and sound desks to be operated by Country Arts SA staff or persons approved by Country Arts SA by prior arrangement only. The Public Health Authority has set a maximum sound level limit of 105 decibels. Country Arts SA has the authority to enforce this ruling.
- The use of pyrotechnics, smoke machines or naked flames (other than dry ice), will only be permitted with the appropriate South Australian licences, and in the presence of a representative of the South Australian Metropolitan Fire Service which will be at the hirer's expense. No flammable liquids or explosive material may be brought into the premises.
- All rigging of scenery, lighting etc. must comply with Occupational Health, Safety and Welfare Regulations, and Department of Industrial Relations Regulations. Country Arts SA may refuse the use of any scenery, lighting, sound or other equipment. Counterweight flying system is not to be used by persons under the age of eighteen years and only by persons approved by Country Arts SA by prior arrangement.
- Smoking in the theatre is prohibited other than on stage as part of the performance by prior arrangement. No alcohol shall be brought into the premises, other than by prior arrangement. No foodstuffs or liquids may be taken onto the stage, other than as part of the performance by prior arrangement.
- Corridors surrounding the stage must be kept totally clear of all props and scenery at all times. All performers and backstage crew are to enter the theatre via the stage door. Access is not permitted via the theatre foyer. No persons, other than members of the production crew will be permitted in the auditorium and foyer areas during rehearsals.
- The Theatre is fitted with JLG model 20DVL elevated work platforms to assist in rigging and focussing equipment above the stages. The platforms will elevate to 20 feet above stage level (25 foot max working height). People wishing to use these platforms must produce their yellow Operator Training card as issued by the Elevating Work Platform Association of Australia as proof of training, before commencing work on these platforms.

For technical advice contact Head Technician Paul Travers 0401 125 896



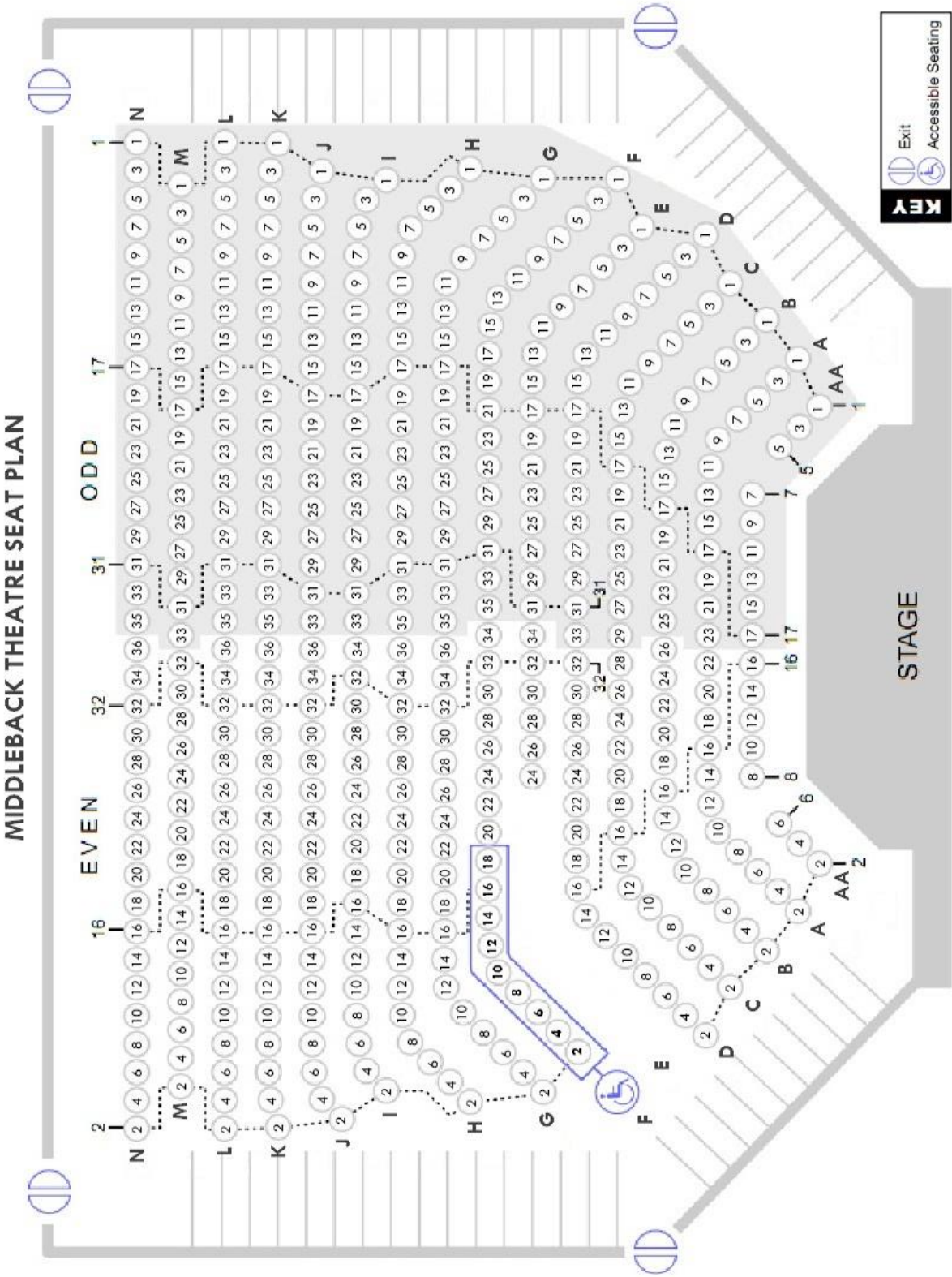






MIDDLEBACK THEATRE GALLERY LEVEL

NOT TO SCALE

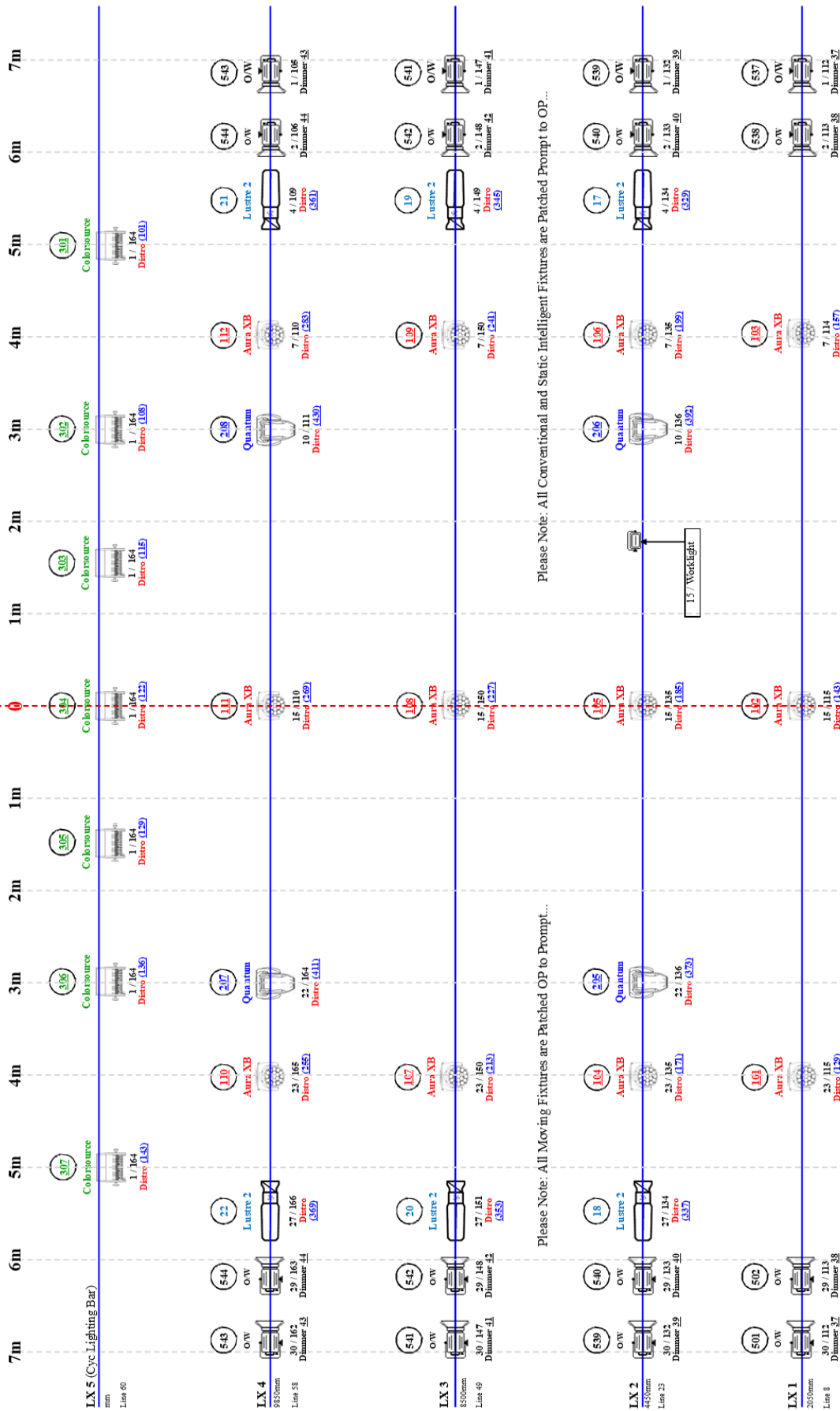


Middleback Arts Centre - Whyalla Standard Lighting Rig (Stage)



KEY

- Chs: Fixture
- Chs: Colour
- Chs: Circuit
- Chs: Address
- CCT Frame
- CCT RIG
- Mic: Aura XB
- Mic: Quantum Profile
- ETC: ColorSource
- LED Worklight



Please Note: Reference point for lamp positions in the symbols used above is where the yoke joins the lamp.

Please Note: Measurements shown for LX Bars are taken from the rear of the Proscenium Wall. (800mm from Stage edge)

Middleback Arts Centre - Whyalla Standard Lighting Rig (FOH)



KEY

Chs

Fixture

Bar / Cluster /
Dinner 2

Co Bar

Chs

100w Halogen
Downlight

Mic Quantum
Profile

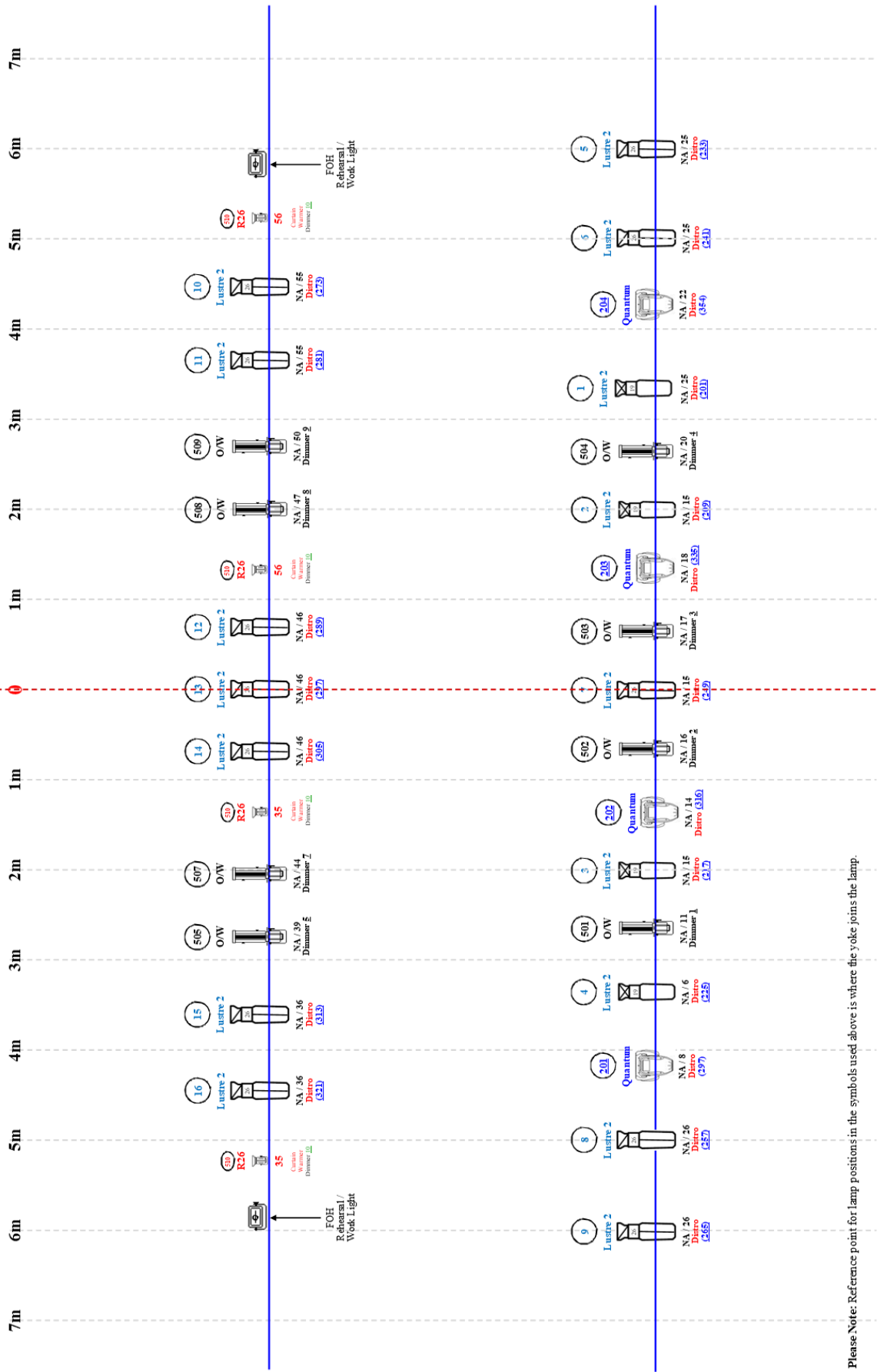
ETC Lustr2
(27)

ETC Lustr2
(17)

CCT 50w
Profile

CCT 8115

CCT 8130



Please Note: Reference point for lamp positions in the symbols used above is where the yoke joins the lamp.

Lighting Bars

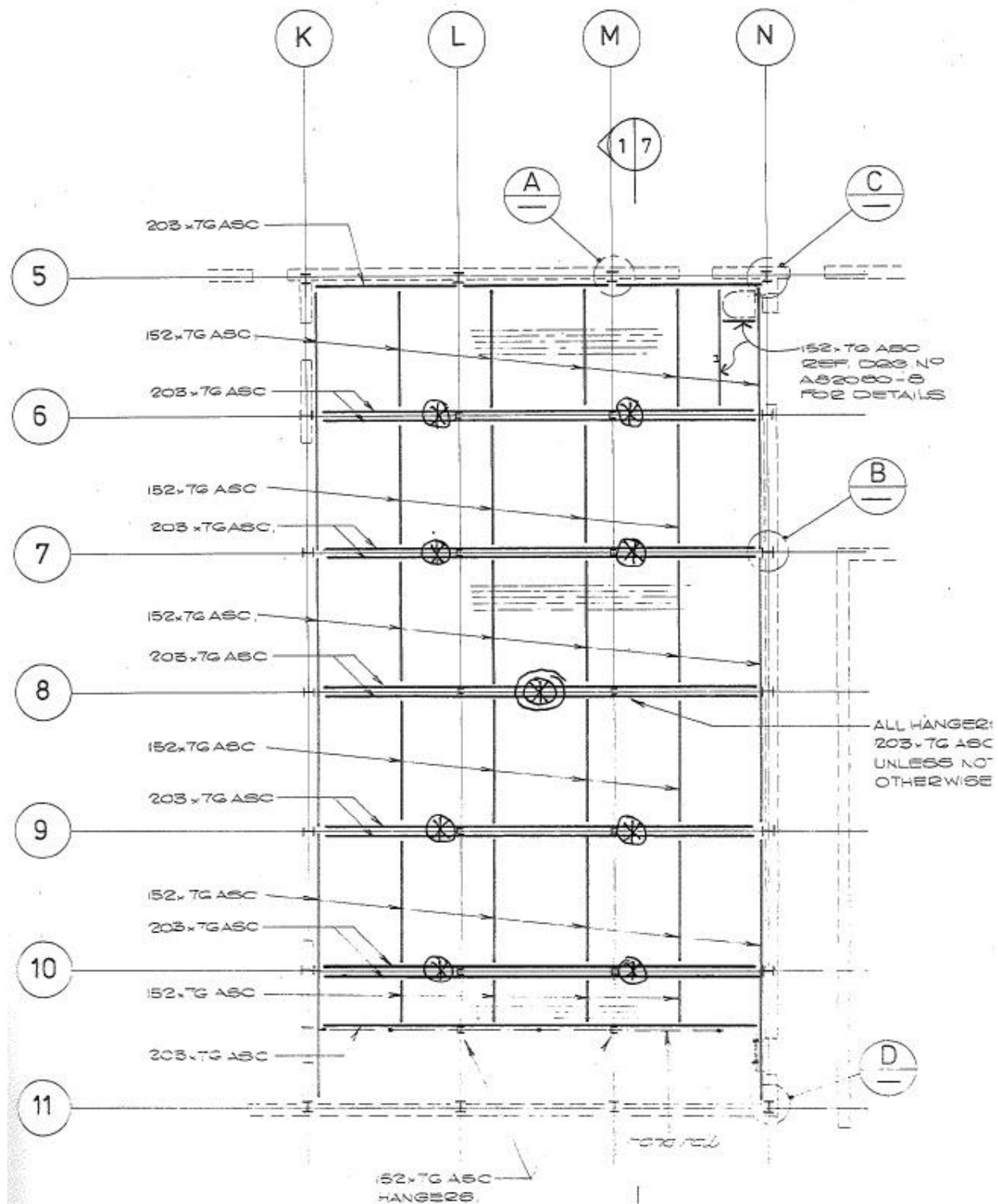
STAGE

LX1	4 X Martin Mac Aura XB (wash) 2 x Martin Mac Quantum Profile
LX 2	4 x Martin Mac Aura XB (Wash)
LX 3	4 X Martin Mac Aura XB (Wash) 2 X Martin Mac Quantum Profile
LX 4	5 X CCT 1K Sarlette Fresnel 5 x CCT Minuette Zoom Profile
LX 5	7 X ETC Colour Source CYC
Grown Row	7 X ETC Colour Source CYC

FOH

Bridge 1	9 x ETC Source Four Profile
Bridge 2	9 x ETC Source Four Profile 4 x Martin Mac Quantum Profile

Rigging Plan for Grid



PLAN ON GRID

SHOWING ALLOWABLE RIGGING POINT LOADS

⊗ 1000 kg at midspan, on 203x76 ASC or on 530 UB roof beam.

⊗ 1000 kg at $\frac{1}{3}$ pt of span (or closer to support) on 203x76 ASC or 530 UB roof beam.

WAKA-MIDDLEBACK THEATRE
JOB No 3474
Jim Wilson P/L.